

$$7\% \text{ van } 77000 =$$

$$1\% \text{ van } 1000 =$$

$$3\% \text{ van } 14000 =$$

$$6\% \text{ van } 43000 =$$

$$5\% \text{ van } 4100 =$$

$$8\% \text{ van } 452 =$$

$$2\% \text{ van } 632 =$$

$$4\% \text{ van } 303 =$$

$$2\% \text{ van } 390 =$$

$$7\% \text{ van } 326 =$$

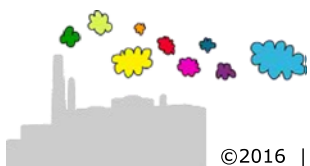
$$85\% \text{ van } 43 =$$

$$56\% \text{ van } 3 =$$

$$32\% \text{ van } 9,2 =$$

$$44\% \text{ van } 80 =$$

$$93\% \text{ van } 54 =$$



$$7\% \text{ van } 77000 = 7 \times 770 \quad (= 5390)$$

$$1\% \text{ van } 1000 = 1 \times 10 \quad (= 10)$$

$$3\% \text{ van } 14000 = 3 \times 140 \quad (= 420)$$

$$6\% \text{ van } 43000 = 6 \times 430 \quad (= 2580)$$

$$5\% \text{ van } 4100 = 5 \times 41 \quad (= 205)$$

$$8\% \text{ van } 452 = 8 \times 4,52 \quad (= 36,16)$$

$$2\% \text{ van } 632 = 2 \times 6,32 \quad (= 12,64)$$

$$4\% \text{ van } 303 = 4 \times 3,03 \quad (= 12,12)$$

$$2\% \text{ van } 390 = 2 \times 3,9 \quad (= 7,8)$$

$$7\% \text{ van } 326 = 7 \times 3,26 \quad (= 22,82)$$

$$85\% \text{ van } 43 = 85 \times 0,43 \quad (= 36,55)$$

$$56\% \text{ van } 3 = 56 \times 0,03 \quad (= 1,68)$$

$$32\% \text{ van } 9,2 = 32 \times 0,092 \quad (= 2,944)$$

$$44\% \text{ van } 80 = 44 \times 0,8 \quad (= 35,2)$$

$$93\% \text{ van } 54 = 93 \times 0,54 \quad (= 50,22)$$

