

74,494 L = cm³

26,93 m³ = hL

141 dL = cL

1 pond = kilo

22 ton = kilo

512 dm³ = L

633,9 km = dam

992,5 cm³ = mL

2,18 dam² = dm²

8 cL = dL

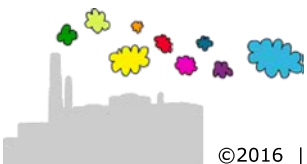
330,85 cL = mL

463,736 hm = km

440,53 m³ = hL

318,587 mm = hm

29 cL = mL



$$74,494 \text{ L} = 74,494 \text{ dm}^3 = 74494 \text{ cm}^3$$

$$26,93 \text{ m}^3 = 26930 \text{ dm}^3 = 26930 \text{ L} = 269,3 \text{ hL}$$

$$141 \text{ dL} = 1410 \text{ cL}$$

$$1 \text{ pond} = 0,5 \text{ kilo}$$

$$22 \text{ ton} = 22000 \text{ kilo}$$

$$512 \text{ dm}^3 = 512 \text{ L}$$

$$633,9 \text{ km} = 63390 \text{ dam} \quad (\text{komma } 2 \text{ plaatsen naar rechts})$$

$$992,5 \text{ cm}^3 = 0,9925 \text{ dm}^3 = 0,9925 \text{ L} = 992,5 \text{ mL}$$

$$2,18 \text{ dam}^2 = 21800 \text{ dm}^2 \quad (\text{komma } 2 \times 2 \text{ plaatsen naar rechts})$$

$$8 \text{ cL} = 0,8 \text{ dL}$$

$$330,85 \text{ cL} = 3308,5 \text{ mL}$$

$$463,736 \text{ hm} = 46,3736 \text{ km} \quad (\text{komma } 1 \text{ plaats naar links})$$

$$440,53 \text{ m}^3 = 440530 \text{ dm}^3 = 440530 \text{ L} = 440,53 \text{ hL}$$

$$318,587 \text{ mm} = 0,00318587 \text{ hm} \quad (\text{komma } 5 \text{ plaatsen naar links})$$

$$29 \text{ cL} = 290 \text{ mL}$$

