

2501 dg = ..... mg

4423 dg = ..... mg

2 kilo = ..... gram

1407 dg = ..... g

2951 mg = ..... cg

413 gram = ..... kilo

1473 cg = ..... g

7868 dg = ..... g

4524 dag = ..... g

4033 cg = ..... dg

3801 cg = ..... g

7334 mg = ..... dg

10 kilo = ..... gram

6 kilo = ..... pond

27 pond = ..... kilo

199 dg = ..... cg

763 dg = ..... cg

17 ton = ..... kilo

14 kilo = ..... pond

8739 dg = ..... mg

2298 mg = ..... cg

55 ons = ..... pond

59 kg = ..... dag

2760 mg = ..... g

1421 cg = ..... g

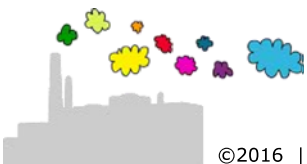
2932 cg = ..... g

17 kilo = ..... ons

55 ons = ..... pond

8430 g = ..... dag

58 dag = ..... kg



$2501 \text{ dg} = 250100 \text{ mg}$

$4423 \text{ dg} = 442300 \text{ mg}$

$2 \text{ kilo} = 2000 \text{ gram}$

$1407 \text{ dg} = 140,7 \text{ g}$

$2951 \text{ mg} = 295,1 \text{ cg}$

$413 \text{ gram} = 0,413 \text{ kilo}$

$1473 \text{ cg} = 14,73 \text{ g}$

$7868 \text{ dg} = 786,8 \text{ g}$

$4524 \text{ dag} = 45240 \text{ g}$

$4033 \text{ cg} = 403,3 \text{ dg}$

$3801 \text{ cg} = 38,01 \text{ g}$

$7334 \text{ mg} = 73,34 \text{ dg}$

$10 \text{ kilo} = 10000 \text{ gram}$

$6 \text{ kilo} = 12 \text{ pond}$

$27 \text{ pond} = 13,5 \text{ kilo}$

$199 \text{ dg} = 1990 \text{ cg}$

$763 \text{ dg} = 7630 \text{ cg}$

$17 \text{ ton} = 17000 \text{ kilo}$

$14 \text{ kilo} = 28 \text{ pond}$

$8739 \text{ dg} = 873900 \text{ mg}$

$2298 \text{ mg} = 229,8 \text{ cg}$

$55 \text{ ons} = 5,5 \text{ kilo} = 11 \text{ pond}$

$59 \text{ kg} = 5900 \text{ dag}$

$2760 \text{ mg} = 2,76 \text{ g}$

$1421 \text{ cg} = 14,21 \text{ g}$

$2932 \text{ cg} = 29,32 \text{ g}$

$17 \text{ kilo} = 170 \text{ ons}$

$55 \text{ ons} = 5,5 \text{ kilo} = 11 \text{ pond}$

$8430 \text{ g} = 843 \text{ dag}$

$58 \text{ dag} = 0,58 \text{ kg}$

