

17 dag = kg

91 hg = kg

3887 dg = mg

9210 dg = dag

10 ons = pond

2000 gram = pond

8 pond = kilo

71 hg = kg

8933 cg = mg

45 ons = pond

9854 g = dag

500 gram = pond

8640 cg = g

1 ons = gram

5 pond = gram

18 pond = kilo

16 kilo = ons

28 kilo = pond

5398 gram = kilo

5724 mg = dg

1600 kilo = ton

3 pond = ons

6248 dg = g

6419 dg = mg

3694 dg = dag

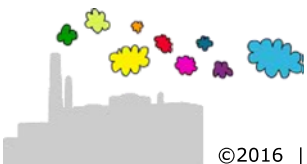
87 dag = hg

4983 dg = g

3775 dag = g

50 ons = pond

8 ton = kilo



$17 \text{ dag} = 0,17 \text{ kg}$

$91 \text{ hg} = 9,1 \text{ kg}$

$3887 \text{ dg} = 388700 \text{ mg}$

$9210 \text{ dg} = 92,1 \text{ dag}$

$10 \text{ ons} = 1 \text{ kilo} = 2 \text{ pond}$

$2000 \text{ gram} = 2 \text{ kilo} = 4 \text{ pond}$

$8 \text{ pond} = 4 \text{ kilo}$

$71 \text{ hg} = 7,1 \text{ kg}$

$8933 \text{ cg} = 89330 \text{ mg}$

$45 \text{ ons} = 4,5 \text{ kilo} = 9 \text{ pond}$

$9854 \text{ g} = 985,4 \text{ dag}$

$500 \text{ gram} = 0,5 \text{ kilo} = 1 \text{ pond}$

$8640 \text{ cg} = 86,4 \text{ g}$

$1 \text{ ons} = 100 \text{ gram}$

$5 \text{ pond} = 2,5 \text{ kilo} = 2500 \text{ gram}$

$18 \text{ pond} = 9 \text{ kilo}$

$16 \text{ kilo} = 160 \text{ ons}$

$28 \text{ kilo} = 56 \text{ pond}$

$5398 \text{ gram} = 5,398 \text{ kilo}$

$5724 \text{ mg} = 57,24 \text{ dg}$

$1600 \text{ kilo} = 1,6 \text{ ton}$

$3 \text{ pond} = 1,5 \text{ kilo} = 15 \text{ ons}$

$6248 \text{ dg} = 624,8 \text{ g}$

$6419 \text{ dg} = 641900 \text{ mg}$

$3694 \text{ dg} = 36,94 \text{ dag}$

$87 \text{ dag} = 8,7 \text{ hg}$

$4983 \text{ dg} = 498,3 \text{ g}$

$3775 \text{ dag} = 37750 \text{ g}$

$50 \text{ ons} = 5 \text{ kilo} = 10 \text{ pond}$

$8 \text{ ton} = 8000 \text{ kilo}$

