

8907 mg = g

33 dg = hg

8698 g = mg

1 pond = ons

2524 mg = cg

18 kilo = gram

17 kilo = gram

84 g = kg

1497 g = dg

3329 gram = kilo

23 ons = gram

8448 dag = dg

50 ons = pond

58 dg = hg

360 dg = dag

11 kilo = pond

13 kilo = pond

2500 gram = pond

5515 hg = dg

3500 gram = pond

15 ons = pond

1411 cg = mg

132 gram = kilo

9370 dag = g

2000 gram = pond

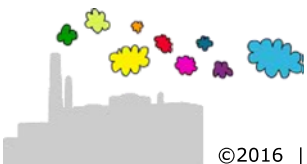
7561 dg = mg

862 mg = dg

900 kilo = ton

48 hg = kg

785 gram = ons



$8907 \text{ mg} = 8,907 \text{ g}$

$33 \text{ dg} = 0,033 \text{ hg}$

$8698 \text{ g} = 8698000 \text{ mg}$

$1 \text{ pond} = 0,5 \text{ kilo} = 5 \text{ ons}$

$2524 \text{ mg} = 252,4 \text{ cg}$

$18 \text{ kilo} = 18000 \text{ gram}$

$17 \text{ kilo} = 17000 \text{ gram}$

$84 \text{ g} = 0,084 \text{ kg}$

$1497 \text{ g} = 14970 \text{ dg}$

$3329 \text{ gram} = 3,329 \text{ kilo}$

$23 \text{ ons} = 2300 \text{ gram}$

$8448 \text{ dag} = 844800 \text{ dg}$

$50 \text{ ons} = 5 \text{ kilo} = 10 \text{ pond}$

$58 \text{ dg} = 0,058 \text{ hg}$

$360 \text{ dg} = 3,6 \text{ dag}$

$11 \text{ kilo} = 22 \text{ pond}$

$13 \text{ kilo} = 26 \text{ pond}$

$2500 \text{ gram} = 2,5 \text{ kilo} = 5 \text{ pond}$

$5515 \text{ hg} = 5515000 \text{ dg}$

$3500 \text{ gram} = 3,5 \text{ kilo} = 7 \text{ pond}$

$15 \text{ ons} = 1,5 \text{ kilo} = 3 \text{ pond}$

$1411 \text{ cg} = 14110 \text{ mg}$

$132 \text{ gram} = 0,132 \text{ kilo}$

$9370 \text{ dag} = 93700 \text{ g}$

$2000 \text{ gram} = 2 \text{ kilo} = 4 \text{ pond}$

$7561 \text{ dg} = 756100 \text{ mg}$

$862 \text{ mg} = 8,62 \text{ dg}$

$900 \text{ kilo} = 0,9 \text{ ton}$

$48 \text{ hg} = 4,8 \text{ kg}$

$785 \text{ gram} = 7,85 \text{ ons}$

