

$363 \text{ kg} = \dots\dots\dots \text{ g}$

$5941 \text{ dg} = \dots\dots\dots \text{ g}$

$8 \text{ g} = \dots\dots\dots \text{ kg}$

$1 \text{ kilo} = \dots\dots\dots \text{ pond}$

$1100 \text{ kilo} = \dots\dots\dots \text{ ton}$

$8586 \text{ dag} = \dots\dots\dots \text{ dg}$

$1600 \text{ kilo} = \dots\dots\dots \text{ ton}$

$3289 \text{ dg} = \dots\dots\dots \text{ dag}$

$3684 \text{ g} = \dots\dots\dots \text{ cg}$

$4899 \text{ kg} = \dots\dots\dots \text{ g}$

$6643 \text{ hg} = \dots\dots\dots \text{ dg}$

$4500 \text{ gram} = \dots\dots\dots \text{ pond}$

$638 \text{ cg} = \dots\dots\dots \text{ dg}$

$600 \text{ kilo} = \dots\dots\dots \text{ ton}$

$501 \text{ gram} = \dots\dots\dots \text{ ons}$

$16 \text{ ons} = \dots\dots\dots \text{ kilo}$

$1800 \text{ kilo} = \dots\dots\dots \text{ ton}$

$9 \text{ kilo} = \dots\dots\dots \text{ gram}$

$6270 \text{ g} = \dots\dots\dots \text{ dag}$

$56 \text{ hg} = \dots\dots\dots \text{ dag}$

$8220 \text{ kg} = \dots\dots\dots \text{ g}$

$181 \text{ gram} = \dots\dots\dots \text{ ons}$

$17 \text{ kilo} = \dots\dots\dots \text{ gram}$

$9416 \text{ g} = \dots\dots\dots \text{ dg}$

$5918 \text{ cg} = \dots\dots\dots \text{ dg}$

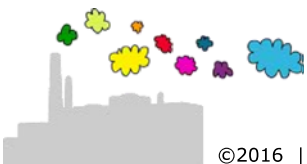
$55 \text{ ons} = \dots\dots\dots \text{ pond}$

$2771 \text{ dg} = \dots\dots\dots \text{ mg}$

$2 \text{ pond} = \dots\dots\dots \text{ ons}$

$9888 \text{ cg} = \dots\dots\dots \text{ g}$

$144 \text{ gram} = \dots\dots\dots \text{ ons}$



$363 \text{ kg} = 363000 \text{ g}$

$5941 \text{ dg} = 594,1 \text{ g}$

$8 \text{ g} = 0,008 \text{ kg}$

$1 \text{ kilo} = 2 \text{ pond}$

$1100 \text{ kilo} = 1,1 \text{ ton}$

$8586 \text{ dag} = 858600 \text{ dg}$

$1600 \text{ kilo} = 1,6 \text{ ton}$

$3289 \text{ dg} = 32,89 \text{ dag}$

$3684 \text{ g} = 368400 \text{ cg}$

$4899 \text{ kg} = 4899000 \text{ g}$

$6643 \text{ hg} = 6643000 \text{ dg}$

$4500 \text{ gram} = 4,5 \text{ kilo} = 9 \text{ pond}$

$638 \text{ cg} = 63,8 \text{ dg}$

$600 \text{ kilo} = 0,6 \text{ ton}$

$501 \text{ gram} = 5,01 \text{ ons}$

$16 \text{ ons} = 1,6 \text{ kilo}$

$1800 \text{ kilo} = 1,8 \text{ ton}$

$9 \text{ kilo} = 9000 \text{ gram}$

$6270 \text{ g} = 627 \text{ dag}$

$56 \text{ hg} = 560 \text{ dag}$

$8220 \text{ kg} = 8220000 \text{ g}$

$181 \text{ gram} = 1,81 \text{ ons}$

$17 \text{ kilo} = 17000 \text{ gram}$

$9416 \text{ g} = 94160 \text{ dg}$

$5918 \text{ cg} = 591,8 \text{ dg}$

$55 \text{ ons} = 5,5 \text{ kilo} = 11 \text{ pond}$

$2771 \text{ dg} = 277100 \text{ mg}$

$2 \text{ pond} = 1 \text{ kilo} = 10 \text{ ons}$

$9888 \text{ cg} = 98,88 \text{ g}$

$144 \text{ gram} = 1,44 \text{ ons}$

