

$11,6 \text{ m} = \dots\dots\dots \text{ dm}$

$48,92 \text{ m} = \dots\dots\dots \text{ dm}$

$5 \text{ dm} = \dots\dots\dots \text{ m}$

$55 \text{ dm} = \dots\dots\dots \text{ m}$

$66 \text{ m} = \dots\dots\dots \text{ dm}$

$7 \text{ mm} = \dots\dots\dots \text{ dm}$

$2 \text{ mm} = \dots\dots\dots \text{ m}$

$95 \text{ mm} = \dots\dots\dots \text{ cm}$

$93,88 \text{ mm} = \dots\dots\dots \text{ dm}$

$5 \text{ dm} = \dots\dots\dots \text{ mm}$

$24 \text{ m} = \dots\dots\dots \text{ dm}$

$49 \text{ cm} = \dots\dots\dots \text{ mm}$

$4,21 \text{ cm} = \dots\dots\dots \text{ mm}$

$9,9 \text{ dm} = \dots\dots\dots \text{ cm}$

$41,5 \text{ mm} = \dots\dots\dots \text{ cm}$

$88,62 \text{ cm} = \dots\dots\dots \text{ mm}$

$4,9 \text{ cm} = \dots\dots\dots \text{ dm}$

$74,57 \text{ mm} = \dots\dots\dots \text{ dm}$

$53 \text{ cm} = \dots\dots\dots \text{ mm}$

$15,91 \text{ dm} = \dots\dots\dots \text{ cm}$

$10 \text{ m} = \dots\dots\dots \text{ cm}$

$59 \text{ mm} = \dots\dots\dots \text{ dm}$

$4 \text{ mm} = \dots\dots\dots \text{ m}$

$75 \text{ m} = \dots\dots\dots \text{ mm}$

$26,24 \text{ mm} = \dots\dots\dots \text{ cm}$

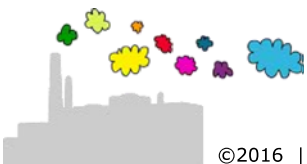
$8 \text{ cm} = \dots\dots\dots \text{ mm}$

$70,3 \text{ dm} = \dots\dots\dots \text{ m}$

$11,19 \text{ mm} = \dots\dots\dots \text{ m}$

$95,4 \text{ mm} = \dots\dots\dots \text{ cm}$

$4,45 \text{ m} = \dots\dots\dots \text{ cm}$



$11,6 \text{ m} = 116 \text{ dm}$

$48,92 \text{ m} = 489,2 \text{ dm}$

$5 \text{ dm} = 0,5 \text{ m}$

$55 \text{ dm} = 5,5 \text{ m}$

$66 \text{ m} = 660 \text{ dm}$

$7 \text{ mm} = 0,07 \text{ dm}$

$2 \text{ mm} = 0,002 \text{ m}$

$95 \text{ mm} = 9,5 \text{ cm}$

$93,88 \text{ mm} = 0,9388 \text{ dm}$

$5 \text{ dm} = 500 \text{ mm}$

$24 \text{ m} = 240 \text{ dm}$

$49 \text{ cm} = 490 \text{ mm}$

$4,21 \text{ cm} = 42,1 \text{ mm}$

$9,9 \text{ dm} = 99 \text{ cm}$

$41,5 \text{ mm} = 4,15 \text{ cm}$

$88,62 \text{ cm} = 886,2 \text{ mm}$

$4,9 \text{ cm} = 0,49 \text{ dm}$

$74,57 \text{ mm} = 0,7457 \text{ dm}$

$53 \text{ cm} = 530 \text{ mm}$

$15,91 \text{ dm} = 159,1 \text{ cm}$

$10 \text{ m} = 1000 \text{ cm}$

$59 \text{ mm} = 0,59 \text{ dm}$

$4 \text{ mm} = 0,004 \text{ m}$

$75 \text{ m} = 75000 \text{ mm}$

$26,24 \text{ mm} = 2,624 \text{ cm}$

$8 \text{ cm} = 80 \text{ mm}$

$70,3 \text{ dm} = 7,03 \text{ m}$

$11,19 \text{ mm} = 0,01119 \text{ m}$

$95,4 \text{ mm} = 9,54 \text{ cm}$

$4,45 \text{ m} = 445 \text{ cm}$

