

$4 \text{ dm} = \dots\dots\dots \text{ m}$

$7,42 \text{ dm} = \dots\dots\dots \text{ m}$

$60 \text{ dm} = \dots\dots\dots \text{ m}$

$53 \text{ m} = \dots\dots\dots \text{ dm}$

$78 \text{ m} = \dots\dots\dots \text{ dm}$

$95,15 \text{ cm} = \dots\dots\dots \text{ mm}$

$3,73 \text{ cm} = \dots\dots\dots \text{ dm}$

$6 \text{ m} = \dots\dots\dots \text{ cm}$

$22,08 \text{ m} = \dots\dots\dots \text{ cm}$

$81 \text{ cm} = \dots\dots\dots \text{ dm}$

$47,9 \text{ dm} = \dots\dots\dots \text{ m}$

$43 \text{ m} = \dots\dots\dots \text{ mm}$

$63,29 \text{ mm} = \dots\dots\dots \text{ cm}$

$43,71 \text{ m} = \dots\dots\dots \text{ cm}$

$9 \text{ m} = \dots\dots\dots \text{ dm}$

$81,3 \text{ mm} = \dots\dots\dots \text{ cm}$

$5,91 \text{ cm} = \dots\dots\dots \text{ dm}$

$92 \text{ dm} = \dots\dots\dots \text{ m}$

$9 \text{ m} = \dots\dots\dots \text{ dm}$

$5 \text{ dm} = \dots\dots\dots \text{ m}$

$64 \text{ mm} = \dots\dots\dots \text{ m}$

$1 \text{ mm} = \dots\dots\dots \text{ cm}$

$9 \text{ m} = \dots\dots\dots \text{ dm}$

$10 \text{ mm} = \dots\dots\dots \text{ dm}$

$8 \text{ mm} = \dots\dots\dots \text{ m}$

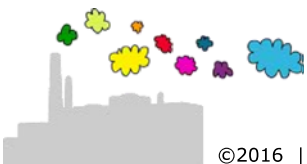
$3,75 \text{ m} = \dots\dots\dots \text{ cm}$

$9,9 \text{ cm} = \dots\dots\dots \text{ mm}$

$41,97 \text{ mm} = \dots\dots\dots \text{ m}$

$5 \text{ cm} = \dots\dots\dots \text{ mm}$

$9,3 \text{ mm} = \dots\dots\dots \text{ m}$



$$4 \text{ dm} = 0,4 \text{ m}$$

$$7,42 \text{ dm} = 0,742 \text{ m}$$

$$60 \text{ dm} = 6 \text{ m}$$

$$53 \text{ m} = 530 \text{ dm}$$

$$78 \text{ m} = 780 \text{ dm}$$

$$95,15 \text{ cm} = 951,5 \text{ mm}$$

$$3,73 \text{ cm} = 0,373 \text{ dm}$$

$$6 \text{ m} = 600 \text{ cm}$$

$$22,08 \text{ m} = 2208 \text{ cm}$$

$$81 \text{ cm} = 8,1 \text{ dm}$$

$$47,9 \text{ dm} = 4,79 \text{ m}$$

$$43 \text{ m} = 43000 \text{ mm}$$

$$63,29 \text{ mm} = 6,329 \text{ cm}$$

$$43,71 \text{ m} = 4371 \text{ cm}$$

$$9 \text{ m} = 90 \text{ dm}$$

$$81,3 \text{ mm} = 8,13 \text{ cm}$$

$$5,91 \text{ cm} = 0,591 \text{ dm}$$

$$92 \text{ dm} = 9,2 \text{ m}$$

$$9 \text{ m} = 90 \text{ dm}$$

$$5 \text{ dm} = 0,5 \text{ m}$$

$$64 \text{ mm} = 0,064 \text{ m}$$

$$1 \text{ mm} = 0,1 \text{ cm}$$

$$9 \text{ m} = 90 \text{ dm}$$

$$10 \text{ mm} = 0,1 \text{ dm}$$

$$8 \text{ mm} = 0,008 \text{ m}$$

$$3,75 \text{ m} = 375 \text{ cm}$$

$$9,9 \text{ cm} = 99 \text{ mm}$$

$$41,97 \text{ mm} = 0,04197 \text{ m}$$

$$5 \text{ cm} = 50 \text{ mm}$$

$$9,3 \text{ mm} = 0,0093 \text{ m}$$

