

$4 \text{ m} = \dots\dots\dots \text{ dm}$

$0,2 \text{ dm} = \dots\dots\dots \text{ m}$

$3 \text{ m} = \dots\dots\dots \text{ dm}$

$37 \text{ dm} = \dots\dots\dots \text{ m}$

$7 \text{ dm} = \dots\dots\dots \text{ m}$

$5 \text{ cm} = \dots\dots\dots \text{ dm}$

$18,04 \text{ mm} = \dots\dots\dots \text{ cm}$

$57 \text{ m} = \dots\dots\dots \text{ cm}$

$5 \text{ m} = \dots\dots\dots \text{ mm}$

$1,38 \text{ m} = \dots\dots\dots \text{ mm}$

$8,54 \text{ dm} = \dots\dots\dots \text{ mm}$

$39 \text{ cm} = \dots\dots\dots \text{ mm}$

$31 \text{ dm} = \dots\dots\dots \text{ cm}$

$96 \text{ mm} = \dots\dots\dots \text{ dm}$

$31 \text{ dm} = \dots\dots\dots \text{ cm}$

$0,9 \text{ m} = \dots\dots\dots \text{ mm}$

$77,5 \text{ m} = \dots\dots\dots \text{ mm}$

$3 \text{ m} = \dots\dots\dots \text{ cm}$

$3 \text{ m} = \dots\dots\dots \text{ mm}$

$4 \text{ m} = \dots\dots\dots \text{ dm}$

$8 \text{ m} = \dots\dots\dots \text{ mm}$

$2,95 \text{ dm} = \dots\dots\dots \text{ cm}$

$11 \text{ m} = \dots\dots\dots \text{ dm}$

$82,19 \text{ m} = \dots\dots\dots \text{ dm}$

$2,33 \text{ mm} = \dots\dots\dots \text{ dm}$

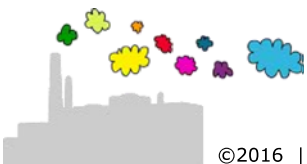
$9 \text{ m} = \dots\dots\dots \text{ dm}$

$2,6 \text{ dm} = \dots\dots\dots \text{ cm}$

$64 \text{ mm} = \dots\dots\dots \text{ m}$

$7 \text{ m} = \dots\dots\dots \text{ cm}$

$98 \text{ m} = \dots\dots\dots \text{ dm}$



$$4 \text{ m} = 40 \text{ dm}$$

$$0,2 \text{ dm} = 0,02 \text{ m}$$

$$3 \text{ m} = 30 \text{ dm}$$

$$37 \text{ dm} = 3,7 \text{ m}$$

$$7 \text{ dm} = 0,7 \text{ m}$$

$$5 \text{ cm} = 0,5 \text{ dm}$$

$$18,04 \text{ mm} = 1,804 \text{ cm}$$

$$57 \text{ m} = 5700 \text{ cm}$$

$$5 \text{ m} = 5000 \text{ mm}$$

$$1,38 \text{ m} = 1380 \text{ mm}$$

$$8,54 \text{ dm} = 854 \text{ mm}$$

$$39 \text{ cm} = 390 \text{ mm}$$

$$31 \text{ dm} = 310 \text{ cm}$$

$$96 \text{ mm} = 0,96 \text{ dm}$$

$$31 \text{ dm} = 310 \text{ cm}$$

$$0,9 \text{ m} = 900 \text{ mm}$$

$$77,5 \text{ m} = 77500 \text{ mm}$$

$$3 \text{ m} = 300 \text{ cm}$$

$$3 \text{ m} = 3000 \text{ mm}$$

$$4 \text{ m} = 40 \text{ dm}$$

$$8 \text{ m} = 8000 \text{ mm}$$

$$2,95 \text{ dm} = 29,5 \text{ cm}$$

$$11 \text{ m} = 110 \text{ dm}$$

$$82,19 \text{ m} = 821,9 \text{ dm}$$

$$2,33 \text{ mm} = 0,0233 \text{ dm}$$

$$9 \text{ m} = 90 \text{ dm}$$

$$2,6 \text{ dm} = 26 \text{ cm}$$

$$64 \text{ mm} = 0,064 \text{ m}$$

$$7 \text{ m} = 700 \text{ cm}$$

$$98 \text{ m} = 980 \text{ dm}$$

