

$24 \text{ m} = \dots\dots\dots \text{ dm}$

$2,48 \text{ m} = \dots\dots\dots \text{ dm}$

$84,18 \text{ dm} = \dots\dots\dots \text{ m}$

$10 \text{ m} = \dots\dots\dots \text{ dm}$

$7,56 \text{ m} = \dots\dots\dots \text{ dm}$

$22,77 \text{ dm} = \dots\dots\dots \text{ m}$

$80,3 \text{ m} = \dots\dots\dots \text{ dm}$

$5 \text{ m} = \dots\dots\dots \text{ dm}$

$79 \text{ dm} = \dots\dots\dots \text{ mm}$

$62,51 \text{ dm} = \dots\dots\dots \text{ mm}$

$3 \text{ m} = \dots\dots\dots \text{ mm}$

$6 \text{ dm} = \dots\dots\dots \text{ cm}$

$85,1 \text{ mm} = \dots\dots\dots \text{ dm}$

$13 \text{ dm} = \dots\dots\dots \text{ m}$

$5 \text{ dm} = \dots\dots\dots \text{ mm}$

$1,33 \text{ mm} = \dots\dots\dots \text{ cm}$

$4,43 \text{ cm} = \dots\dots\dots \text{ m}$

$1,2 \text{ dm} = \dots\dots\dots \text{ mm}$

$8 \text{ m} = \dots\dots\dots \text{ cm}$

$7 \text{ cm} = \dots\dots\dots \text{ mm}$

$5,6 \text{ mm} = \dots\dots\dots \text{ dm}$

$64 \text{ mm} = \dots\dots\dots \text{ cm}$

$1,9 \text{ cm} = \dots\dots\dots \text{ mm}$

$7 \text{ cm} = \dots\dots\dots \text{ dm}$

$0,35 \text{ dm} = \dots\dots\dots \text{ m}$

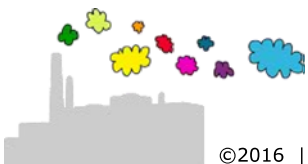
$2 \text{ m} = \dots\dots\dots \text{ cm}$

$9,9 \text{ m} = \dots\dots\dots \text{ dm}$

$1 \text{ cm} = \dots\dots\dots \text{ mm}$

$11 \text{ cm} = \dots\dots\dots \text{ dm}$

$5,83 \text{ dm} = \dots\dots\dots \text{ cm}$



$$24 \text{ m} = 240 \text{ dm}$$

$$2,48 \text{ m} = 24,8 \text{ dm}$$

$$84,18 \text{ dm} = 8,418 \text{ m}$$

$$10 \text{ m} = 100 \text{ dm}$$

$$7,56 \text{ m} = 75,6 \text{ dm}$$

$$22,77 \text{ dm} = 2,277 \text{ m}$$

$$80,3 \text{ m} = 803 \text{ dm}$$

$$5 \text{ m} = 50 \text{ dm}$$

$$79 \text{ dm} = 7900 \text{ mm}$$

$$62,51 \text{ dm} = 6251 \text{ mm}$$

$$3 \text{ m} = 3000 \text{ mm}$$

$$6 \text{ dm} = 60 \text{ cm}$$

$$85,1 \text{ mm} = 0,851 \text{ dm}$$

$$13 \text{ dm} = 1,3 \text{ m}$$

$$5 \text{ dm} = 500 \text{ mm}$$

$$1,33 \text{ mm} = 0,133 \text{ cm}$$

$$4,43 \text{ cm} = 0,0443 \text{ m}$$

$$1,2 \text{ dm} = 120 \text{ mm}$$

$$8 \text{ m} = 800 \text{ cm}$$

$$7 \text{ cm} = 70 \text{ mm}$$

$$5,6 \text{ mm} = 0,056 \text{ dm}$$

$$64 \text{ mm} = 6,4 \text{ cm}$$

$$1,9 \text{ cm} = 19 \text{ mm}$$

$$7 \text{ cm} = 0,7 \text{ dm}$$

$$0,35 \text{ dm} = 0,035 \text{ m}$$

$$2 \text{ m} = 200 \text{ cm}$$

$$9,9 \text{ m} = 99 \text{ dm}$$

$$1 \text{ cm} = 10 \text{ mm}$$

$$11 \text{ cm} = 1,1 \text{ dm}$$

$$5,83 \text{ dm} = 58,3 \text{ cm}$$

