

1400 kilo = ..... ton

11 kilo = ..... ons

29 ons = ..... kilo

60 ons = ..... pond

13 kilo = ..... ons

2000 gram = ..... pond

85 ons = ..... gram

28 kilo = ..... pond

15 ons = ..... pond

20 kilo = ..... gram

1 pond = ..... gram

2000 gram = ..... pond

3 pond = ..... gram

2000 gram = ..... pond

87 ons = ..... kilo

6000 gram = ..... pond

30 kilo = ..... pond

26 pond = ..... kilo

3500 gram = ..... pond

45 ons = ..... gram

17 kilo = ..... pond

89 ons = ..... kilo

900 kilo = ..... ton

498 gram = ..... ons

4 kilo = ..... pond

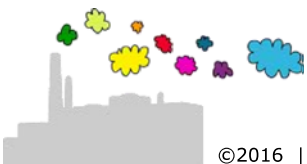
2000 kilo = ..... ton

1100 kilo = ..... ton

1755 gram = ..... kilo

12 kilo = ..... gram

38 ons = ..... kilo



$1400 \text{ kilo} = 1,4 \text{ ton}$

$11 \text{ kilo} = 110 \text{ ons}$

$29 \text{ ons} = 2,9 \text{ kilo}$

$60 \text{ ons} = 6 \text{ kilo} = 12 \text{ pond}$

$13 \text{ kilo} = 130 \text{ ons}$

$2000 \text{ gram} = 2 \text{ kilo} = 4 \text{ pond}$

$85 \text{ ons} = 8500 \text{ gram}$

$28 \text{ kilo} = 56 \text{ pond}$

$15 \text{ ons} = 1,5 \text{ kilo} = 3 \text{ pond}$

$20 \text{ kilo} = 20000 \text{ gram}$

$1 \text{ pond} = 0,5 \text{ kilo} = 500 \text{ gram}$

$2000 \text{ gram} = 2 \text{ kilo} = 4 \text{ pond}$

$3 \text{ pond} = 1,5 \text{ kilo} = 1500 \text{ gram}$

$2000 \text{ gram} = 2 \text{ kilo} = 4 \text{ pond}$

$87 \text{ ons} = 8,7 \text{ kilo}$

$6000 \text{ gram} = 6 \text{ kilo} = 12 \text{ pond}$

$30 \text{ kilo} = 60 \text{ pond}$

$26 \text{ pond} = 13 \text{ kilo}$

$3500 \text{ gram} = 3,5 \text{ kilo} = 7 \text{ pond}$

$45 \text{ ons} = 4500 \text{ gram}$

$17 \text{ kilo} = 34 \text{ pond}$

$89 \text{ ons} = 8,9 \text{ kilo}$

$900 \text{ kilo} = 0,9 \text{ ton}$

$498 \text{ gram} = 4,98 \text{ ons}$

$4 \text{ kilo} = 8 \text{ pond}$

$2000 \text{ kilo} = 2 \text{ ton}$

$1100 \text{ kilo} = 1,1 \text{ ton}$

$1755 \text{ gram} = 1,755 \text{ kilo}$

$12 \text{ kilo} = 12000 \text{ gram}$

$38 \text{ ons} = 3,8 \text{ kilo}$

