

29,048 L = cm³

15,0976 dm³ = L

88,3 cL = mL

80,2 m³ = L

942 L = dm³

20,92 L = cL

3 L = hL

510 m³ = hL

77,83 L = cL

820,4 L = dm³

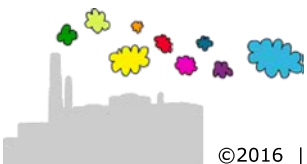
634 m³ = hL

84 dm³ = cL

331,348 L = dm³

876 dm³ = cL

435 dL = L



$$29,048 \text{ L} = 29,048 \text{ dm}^3 = 29048 \text{ cm}^3$$

$$15,0976 \text{ dm}^3 = 15,0976 \text{ L}$$

$$88,3 \text{ cL} = 883 \text{ mL}$$

$$80,2 \text{ m}^3 = 80200 \text{ dm}^3 = 80200 \text{ L}$$

$$942 \text{ L} = 942 \text{ dm}^3$$

$$20,92 \text{ L} = 2092 \text{ cL}$$

$$3 \text{ L} = 0,03 \text{ hL}$$

$$510 \text{ m}^3 = 510000 \text{ dm}^3 = 510000 \text{ L} = 5100 \text{ hL}$$

$$77,83 \text{ L} = 7783 \text{ cL}$$

$$820,4 \text{ L} = 820,4 \text{ dm}^3$$

$$634 \text{ m}^3 = 634000 \text{ dm}^3 = 634000 \text{ L} = 6340 \text{ hL}$$

$$84 \text{ dm}^3 = 84 \text{ L} = 8400 \text{ cL}$$

$$331,348 \text{ L} = 331,348 \text{ dm}^3$$

$$876 \text{ dm}^3 = 876 \text{ L} = 87600 \text{ cL}$$

$$435 \text{ dL} = 43,5 \text{ L}$$

