

253,85 cm = km

8 weken = maanden

814 x 10 =

240 seconden = minuten

4040 : 10 =

1806 : 100 =

750 x 10 =

9 maanden = weken

39800 : 100 =

379,24 hm = m

1054 kg = g

673,404 dm = km

209 : 10 =

1610 : 100 =

132,252 hm = dam

70 dagen = weken

463 : 100 =

16 weken = maanden

17829 : 1000 =

89300 : 100 =

51400 : 100 =

17744 : 1000 =

6,651 km = cm

885000 : 1000 =

2540 : 100 =

141 x 100 =

229 x 1000 =

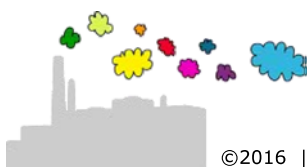
675 x 1000 =

10 kwartier = minuten

1 kwartier = minuten

783 x 10 =

153 : 10 =



$$253,85 \text{ cm} = 0,0025385 \text{ km} \text{ (komma 5 naar links)}$$

$$814 \times 10 = 8140$$

$$4040 : 10 = 404$$

$$750 \times 10 = 7500$$

$$39800 : 100 = 398$$

$$1054 \text{ kg} = 1,054 \text{ g}$$

$$209 : 10 = 20,9$$

$$132,252 \text{ hm} = 1322,52 \text{ dam} \text{ (komma 1 naar rechts)}$$

$$463 : 100 = 4,63$$

$$17829 : 1000 = 17,829$$

$$51400 : 100 = 514$$

$$6,651 \text{ km} = 665100 \text{ cm} \text{ (komma 5 naar rechts)}$$

$$2540 : 100 = 25,4$$

$$229 \times 1000 = 229000$$

$$10 \text{ kwartier} = (10 \times 15) \text{ minuten} = 150 \text{ minuten}$$

$$783 \times 10 = 7830$$

$$8 \text{ weken} = (8 : 4) \text{ maanden} = 2 \text{ maanden}$$

$$240 \text{ seconden} = (240 : 60) \text{ minuten} = 4 \text{ minuten}$$

$$1806 : 100 = 18,06$$

$$9 \text{ maanden} = (9 \times 4) \text{ weken} = 36 \text{ weken}$$

$$379,24 \text{ hm} = 37924 \text{ m} \text{ (komma 2 naar rechts)}$$

$$673,404 \text{ dm} = 0,06734 \text{ km} \text{ (komma 4 naar links)}$$

$$1610 : 100 = 16,1$$

$$70 \text{ dagen} = (70 : 7) \text{ weken} = 10 \text{ weken}$$

$$16 \text{ weken} = (16 : 4) \text{ maanden} = 4 \text{ maanden}$$

$$89300 : 100 = 893$$

$$17744 : 1000 = 17,744$$

$$885000 : 1000 = 885$$

$$141 \times 100 = 14100$$

$$675 \times 1000 = 675000$$

$$1 \text{ kwartier} = (1 \times 15) \text{ minuten} = 15 \text{ minuten}$$

$$153 : 10 = 15,3$$

