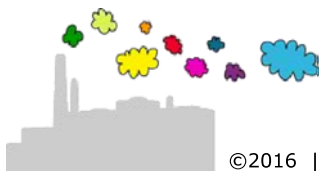
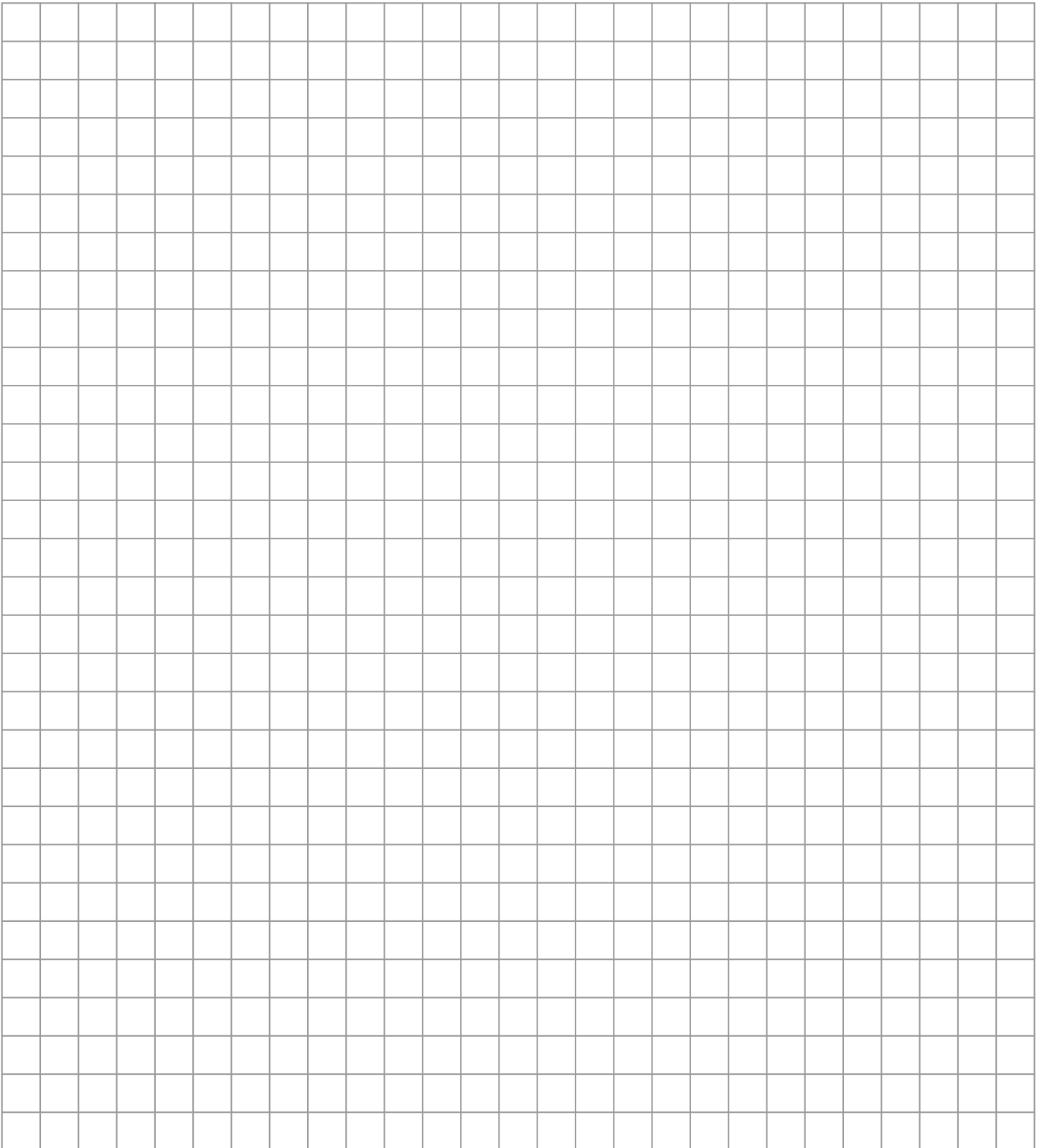


$32,56 \times 0,01 =$

$30,6 : 3 =$

$0,0045 + 9 + 21 + 0,606 =$

$68 - 0,7 =$



$$32,56 \times 0,01 = 0,3256$$

$$0,0045 + 9 + 21 + 0,606 = 30,6105$$

$$30,6 : 3 = 10,2$$

$$68 - 0,7 = 67,3$$

$$\begin{array}{r} 32,56 \\ 0,01 \\ \hline 0,3256 \end{array} \times$$

$$\begin{array}{r} 1 \quad \quad \quad 1 \\ 0,0045 \\ 9, \\ 21 \\ \hline 30,606 \\ 30,6105 \end{array} +$$

$$\begin{array}{r} 3 \diagdown 30,6 \diagup 10,2 \\ 3 \quad \vdots \quad \vdots \\ \hline 006 \\ \quad \quad 6 \\ \hline \quad \quad 0 \end{array}$$

$$\begin{array}{r} 7 \\ 68,10 \\ 0,7 \\ \hline 67,3 \end{array} -$$

