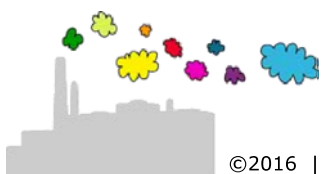
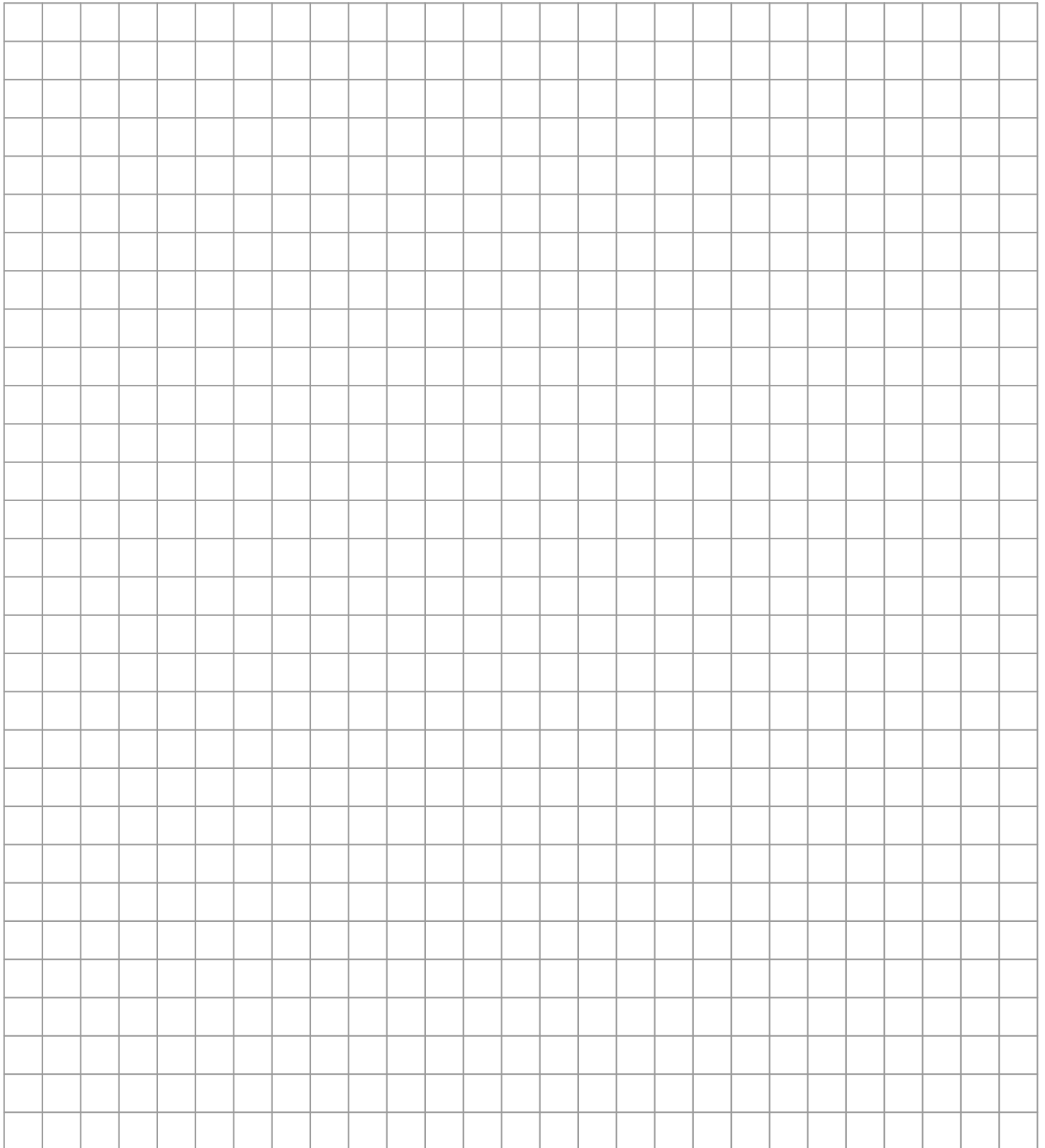


$9,4 \times 0,081 =$

$211,8 : 3 =$

$6 + 64 + 62,609 + 3,497 =$

$3,003 - 0,021 =$



$$9,4 \times 0,081 = 0,7614$$

$$211,8 : 3 = 70,6$$

$$6 + 64 + 62,609 + 3,497 = 136,106$$

$$3,003 - 0,021 = 2,982$$

$$\begin{array}{r} 9,4 \\ 0,081 \times \\ \hline 94 \\ 7524 \\ \hline 0,7614 + \end{array}$$

$$\begin{array}{r} 11 \\ 6 \\ 64 \\ 62,609 \\ 3,497 \\ \hline 136,106 + \end{array}$$

$$\begin{array}{r} 3 \overline{) 211,8} \quad 70,6 \\ \underline{21} \\ 018 \\ \underline{18} \\ 0 \end{array}$$

$$\begin{array}{r} 9 \\ \cancel{3}, \cancel{0}103 \\ \underline{0,021} - \\ ,982 \end{array}$$

