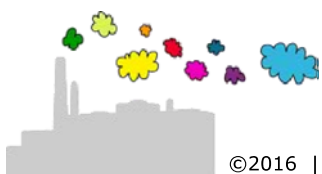
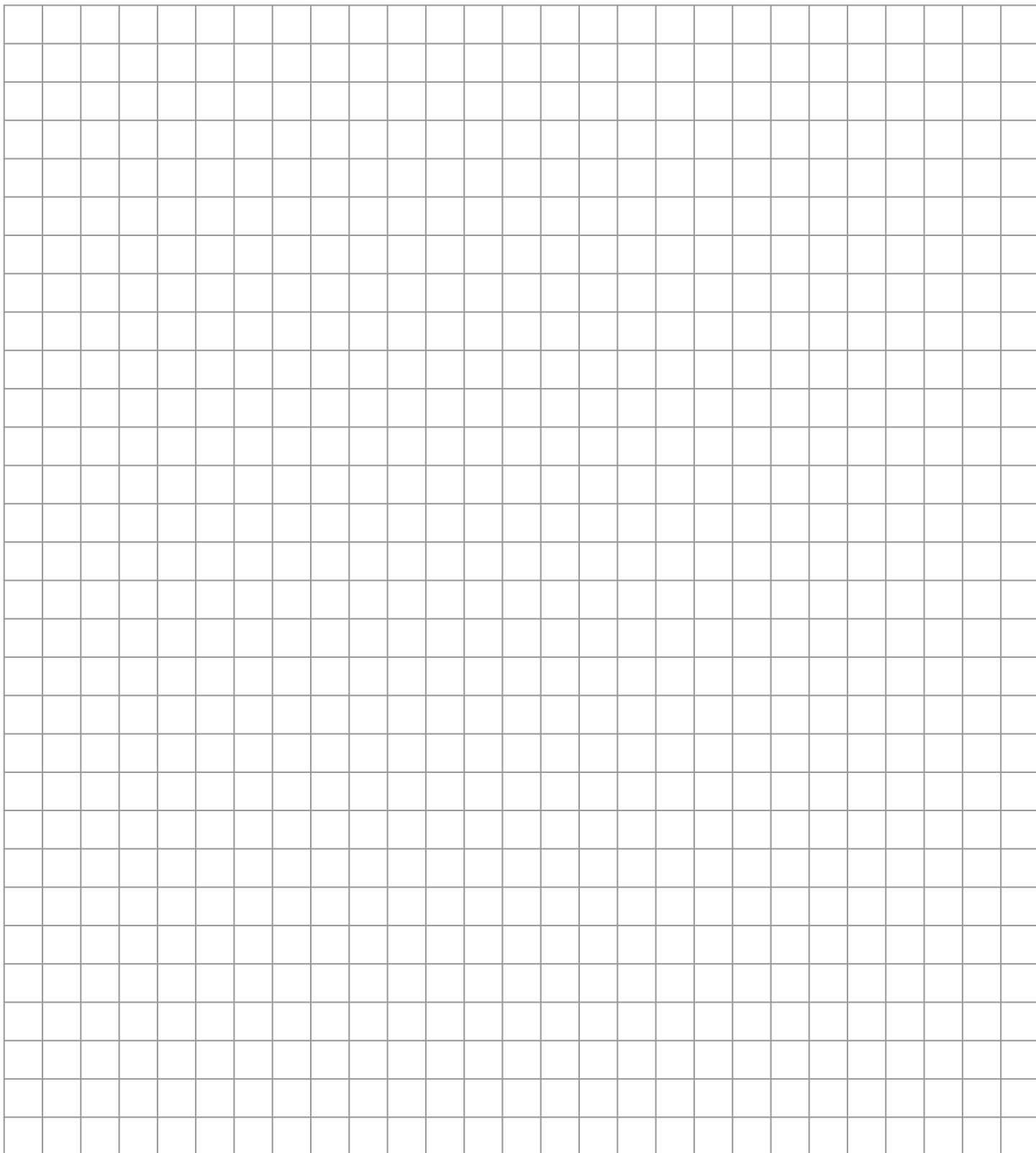


$200,5 : 5 =$

$72 - 0,09 =$

$4 + 7 + 13 + 36 =$

$0,065 \times 4,24 =$



$$200,5 : 5 = 40,1$$

$$72 - 0,09 = 71,91$$

$$4 + 7 + 13 + 36 = 60$$

$$0,065 \times 4,24 = 0,27560$$

$$\begin{array}{r} 5 \overline{) 200,5} \\ \underline{20} \phantom{0} \\ 005 \\ \underline{005} \\ 0 \end{array} \quad \begin{array}{r} 5 \overline{) 40,1} \\ \underline{40} \phantom{0} \\ 010 \\ \underline{010} \\ 0 \end{array}$$

$$\begin{array}{r} 2 \\ 4 \\ 7 \\ 13 \\ \underline{36} \\ 60 \end{array} +$$

$$\begin{array}{r} 1 \phantom{0} \phantom{0} \phantom{0} \\ 7 \overline{) 72,0} \\ \underline{0} \phantom{0} \phantom{0} \\ 71 \phantom{0} \\ \underline{71} \phantom{0} \\ 0 \phantom{0} \phantom{0} \\ \underline{0} \phantom{0} \phantom{0} \\ 91 \phantom{0} \\ \underline{91} \\ 0 \end{array} \quad \begin{array}{r} 9 \phantom{0} \\ 0 \overline{) 0,9} \\ \underline{0} \phantom{0} \\ 9 \phantom{0} \\ \underline{9} \\ 0 \end{array} -$$

$$\begin{array}{r} 0,065 \\ \underline{4,24} \times \\ 260 \\ 1300 \\ 26000 \\ \underline{0,27560} \end{array} +$$

