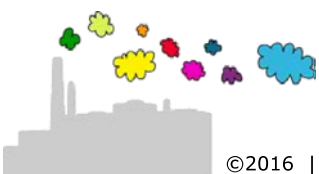
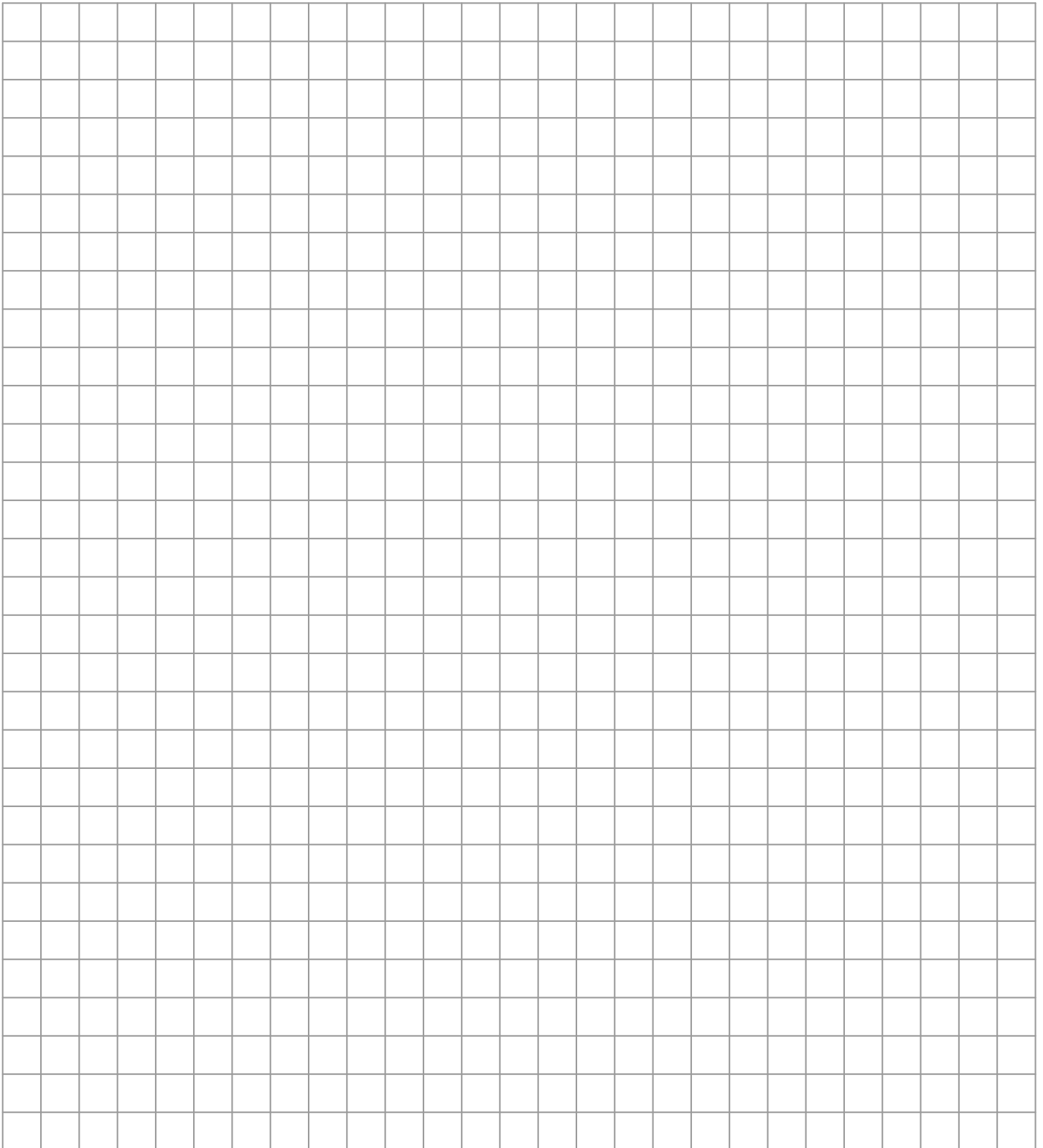


$$0,7 + 6 + 67 + 54,55 =$$

$$362,4 : 4 =$$

$$44,98 - 0,01 =$$

$$7,58 \times 32,22 =$$



$$0,7 + 6 + 67 + 54,55 = 128,25$$

$$362,4 : 4 = 90,6$$

$$44,98 - 0,01 = 44,97$$

$$7,58 \times 32,22 = 244,2276$$

$$\begin{array}{r} 11 \\ 0,7 \\ 67 \\ 54,55 \\ \hline 128,25 \end{array} +$$

$$\begin{array}{r} 4 \overline{) 362,4} \quad 90,6 \\ \underline{36} \\ 024 \\ \underline{024} \\ 0 \end{array}$$

$$\begin{array}{r} 44,98 \\ 0,01 \\ \hline 44,97 \end{array} -$$

$$\begin{array}{r} 7,58 \\ 32,22 \\ \hline 1516 \\ 15160 \\ 2274000 \\ \hline 244,2276 \end{array} \times +$$

