

$1,754 + 31 =$

$81 + 4 + 0,98 =$

$5,73 + 0,003 =$

$0,856 + 0,009 + 0,86 =$

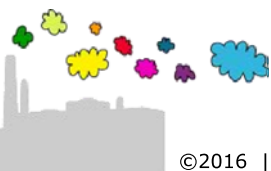
$8 + 90 =$

$25,183 + 40 =$

$0,06 + 0,64 =$

$3 + 6 =$

$$\begin{array}{r} 1,754 \\ 31 \\ \hline \end{array} +$$



$$1,754 + 31 = 32,754$$

$$81 + 4 + 0,98 = 85,98$$

$$5,73 + 0,003 = 5,733$$

$$0,856 + 0,009 + 0,86 = 1,725$$

$$8 + 90 = 98$$

$$25,183 + 40 = 65,183$$

$$0,06 + 0,64 = 0,70$$

$$3 + 6 = 9$$

$$\begin{array}{r} 1,754 \\ 31 \\ \hline 32,754 \end{array} +$$

$$\begin{array}{r} 8 \\ 90 \\ \hline 98 \end{array} +$$

$$\begin{array}{r} 81 \\ 4 \\ 0,98 \\ \hline 85,98 \end{array} +$$

$$\begin{array}{r} 25,183 \\ 40 \\ \hline 65,183 \end{array} +$$

$$\begin{array}{r} 5,73 \\ 0,003 \\ \hline 5,733 \end{array} +$$

$$\begin{array}{r} 1 \\ 0,06 \\ 0,64 \\ \hline 0,70 \end{array} +$$

$$\begin{array}{r} 1,11 \\ 0,856 \\ 0,009 \\ 0,86 \\ \hline 1,725 \end{array} +$$

$$\begin{array}{r} 3 \\ 6 \\ \hline 9 \end{array} +$$

