

$8 : 7 =$

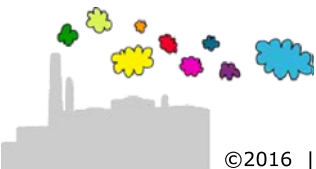
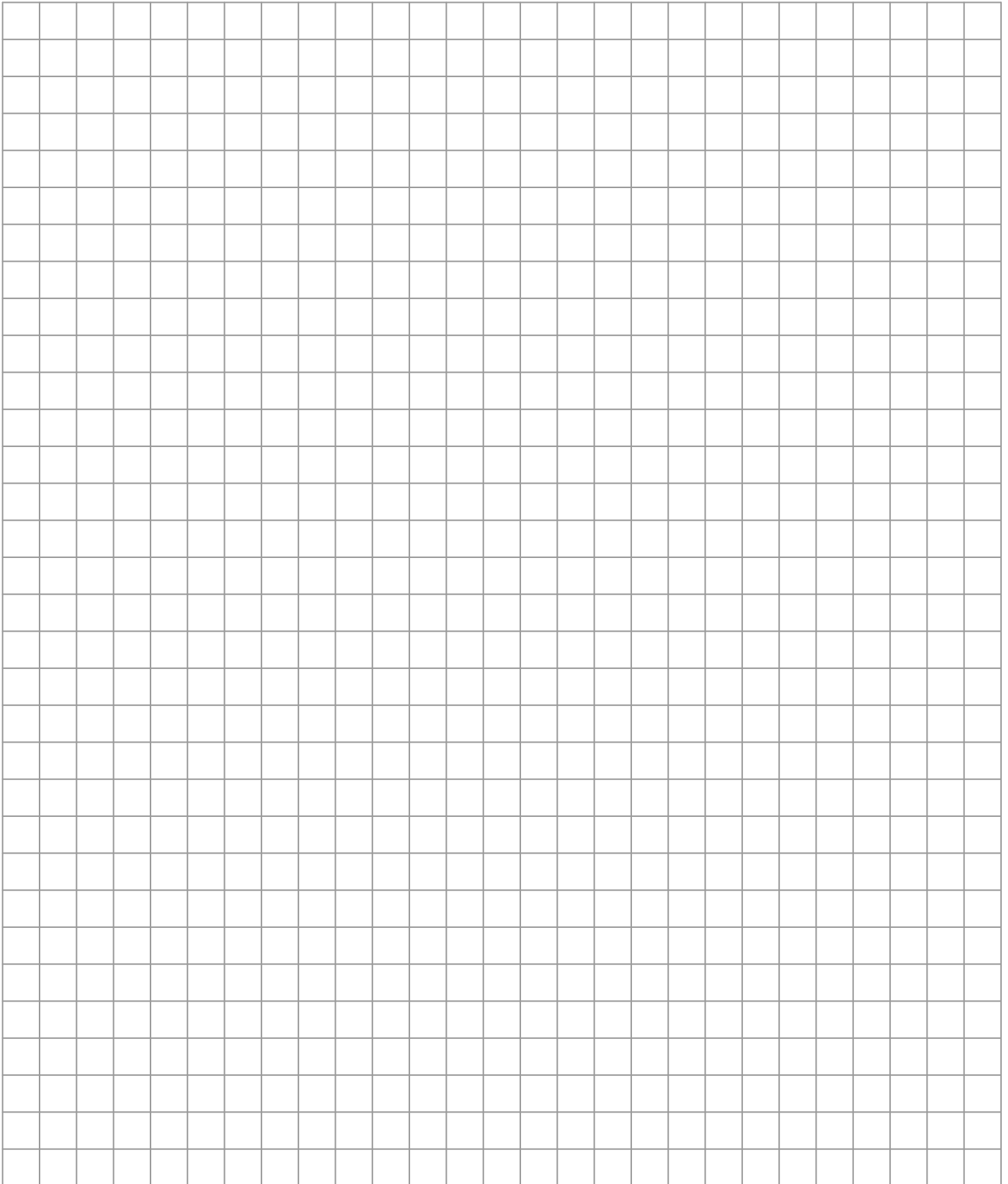
$4 : 3 =$

$5 : 2 =$

$5 : 4 =$

$7 : 5 =$

$7 : 3 =$



$8 : 7 = 1,1428 \text{ rest } 4$

$4 : 3 = 1,3333 \text{ rest } 1$

$5 : 2 = 2,5$

$5 : 4 = 1,25$

$7 : 5 = 1,4$

$7 : 3 = 2,3333 \text{ rest } 1$

7	8	1 , 1 4 2 8	3	4	1 , 3 3 3 3
	7			3	
	1 0			1 0	
	7			9	
	3 0			1 0	
	2 8			9	
	2 0			1 0	
	1 4			9	
	6 0			1 0	
	5 6			9	
	4			1	
2	5	2 , 5	4	5	1 , 2 5
	4			4	
	1 0			1 0	
	1 0			8	
	0			2 0	
				2 0	
				0	
5	7	1 , 4	3	7	2 , 3 3 3 3
	5			6	
	2 0			1 0	
	2 0			9	
	0			1 0	
				9	
				1 0	
				9	
				1 0	
				9	
				1	

