

$$6,39 : 3 =$$

$$8,84 : 4 =$$

$$644 : 2 =$$

$$244 : 2 =$$

$$6,99 : 3 =$$

$$8,88 : 4 =$$

3 / 6 , 3 9 \

4 / 8 , 8 4 \

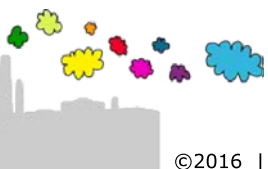
2 / 6 4 4 \

2 / 2 4 4 \

3 / 6 , 9 9 \

4 / 8 , 8 8 \



$$6,39 : 3 = 2,13$$

$$8,84 : 4 = 2,21$$

$$644 : 2 = 320,2$$

$$244 : 2 = 120,2$$

$$6,99 : 3 = 2,33$$

$$8,88 : 4 = 2,22$$

3	/	6	,	3	9	\	2	,	1	3
		6		3	9					
		0		3	9					
				3	9					
				0	9					
				9	9					
				0	9					

2	/	6	4	4	\	3	2	0	,	2
		6	4	4						
		0	4	4						
			4	4						
			0	4						
			4	4						
			0	4						

3	/	6	,	9	9	\	2	,	3	3
		6		9	9					
		0		9	9					
				9	9					
				0	9					
				9	9					
				0	9					

