

Schrijf de volgende kommagetallen als (gemengde) breuk:

$0,43 =$

$0,009 =$

$1,25 =$

$1,5 =$

$0,545 =$

$0,5 =$

$0,75 =$

$0,001 =$

$0,6 =$

$0,25 =$

$0,09 =$

Schrijf de volgende (gemengde) breuken als kommagetallen:

$\frac{567}{1000} =$

$\frac{8}{10} =$

$\frac{1}{2} =$

$12 \frac{1}{2} =$

$12 \frac{5}{10} =$

$\frac{2}{5} =$

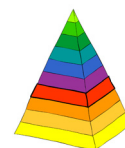
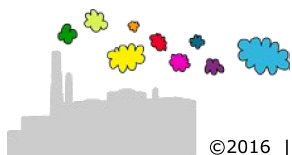
$\frac{1}{10} =$

$4 \frac{6}{10} =$

$\frac{1}{50} =$

$\frac{9}{1000} =$

$\frac{2}{100} =$



Schrijf de volgende kommagetallen als (gemengde) breuk:

$$0,43 = \frac{43}{100}$$

$$0,009 = \frac{9}{1000}$$

$$1,25 = 1 \frac{25}{100} = 1 \frac{1}{4}$$

$$1,5 = 1 \frac{5}{10} = 1 \frac{1}{2}$$

$$0,545 = \frac{545}{1000}$$

$$0,5 = \frac{5}{10} = \frac{1}{2}$$

$$0,75 = \frac{75}{100} = \frac{3}{4}$$

$$0,001 = \frac{1}{1000}$$

$$0,6 = \frac{6}{10} = \frac{3}{5}$$

$$0,25 = \frac{25}{100} = \frac{1}{4}$$

$$0,09 = \frac{9}{100}$$

Schrijf de volgende (gemengde) breuken als kommagetallen:

$$\frac{567}{1000} = 0,567$$

$$\frac{8}{10} = 0,8$$

$$\frac{1}{2} = \frac{5}{10} = 0,5$$

$$12 \frac{1}{2} = 12 \frac{5}{10} = 12,5$$

$$12 \frac{5}{10} = 12,5$$

$$\frac{2}{5} = \frac{4}{10} = 0,4$$

$$\frac{1}{10} = 0,1$$

$$4 \frac{6}{10} = 4,6$$

$$\frac{1}{50} = \frac{2}{100} = 0,02$$

$$\frac{9}{1000} = 0,009$$

$$\frac{2}{100} = 0,02$$

