

Schrijf de volgende kommagetallen
als (gemengde) breuk:

$0,75 =$

$0,17 =$

$1,5 =$

$1,25 =$

$0,003 =$

$0,5 =$

$0,001 =$

$0,123 =$

$0,8 = \quad =$

$0,09 =$

$0,25 =$

Schrijf de volgende (gemengde)
breuken als kommagetallen:

$12 \frac{5}{10} =$

$\frac{1}{2} =$

$12 \frac{1}{2} =$

$\frac{211}{1000} =$

$\frac{4}{10} =$

$\frac{2}{5} =$

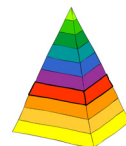
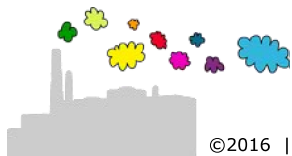
$\frac{1}{10} =$

$7 \frac{3}{10} =$

$\frac{2}{100} =$

$\frac{1}{50} =$

$\frac{6}{1000} =$



Schrijf de volgende kommagetallen als (gemengde) breuk:

$$0,75 = \frac{75}{100} = \frac{3}{4}$$

$$0,17 = \frac{17}{100}$$

$$1,5 = 1\frac{5}{10} = 1\frac{1}{2}$$

$$1,25 = 1\frac{25}{100} = 1\frac{1}{4}$$

$$0,003 = \frac{3}{1000}$$

$$0,5 = \frac{5}{10} = \frac{1}{2}$$

$$0,001 = \frac{1}{1000}$$

$$0,123 = \frac{123}{1000}$$

$$0,8 = \frac{8}{10} = \frac{4}{5}$$

$$0,09 = \frac{9}{100}$$

$$0,25 = \frac{25}{100} = \frac{1}{4}$$

Schrijf de volgende (gemengde) breuken als kommagetallen:

$$12\frac{5}{10} = 12,5$$

$$\frac{1}{2} = \frac{5}{10} = 0,5$$

$$12\frac{1}{2} = 12\frac{5}{10} = 12,5$$

$$\frac{211}{1000} = 0,211$$

$$\frac{4}{10} = 0,4$$

$$\frac{2}{5} = \frac{4}{10} = 0,4$$

$$\frac{1}{10} = 0,1$$

$$7\frac{3}{10} = 7,3$$

$$\frac{2}{100} = 0,02$$

$$\frac{1}{50} = \frac{2}{100} = 0,02$$

$$\frac{6}{1000} = 0,006$$

