

Schrijf de volgende kommagetallen als (gemengde) breuk:

$0,02 =$

$0,8 =$

$0,75 =$

$0,009 =$

$1,5 =$

$0,22 =$

$0,001 =$

$9,75 =$

$0,25 =$

$0,999 =$

$0,07 =$

$0,5 =$

Schrijf de volgende (gemengde) breuken als kommagetallen:

$1\frac{1}{2} =$

$\frac{5}{10} =$

$\frac{2}{100} =$

$\frac{5}{1000} =$

$12\frac{5}{10} =$

$\frac{285}{1000} =$

$3\frac{3}{10} =$

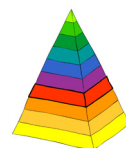
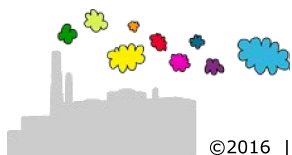
$\frac{1}{2} =$

$\frac{1}{10} =$

$\frac{2}{5} =$

$\frac{9}{100} =$

$\frac{46}{100} =$



Schrijf de volgende kommagetallen als (gemengde) breuk:

$$0,02 = \frac{2}{100} = \frac{1}{50}$$

$$0,8 = \frac{8}{10} = \frac{4}{5}$$

$$0,75 = \frac{75}{100} = \frac{3}{4}$$

$$0,009 = \frac{9}{1000}$$

$$1,5 = 1\frac{5}{10} = 1\frac{1}{2}$$

$$0,22 = \frac{22}{100} = \frac{11}{50}$$

$$0,001 = \frac{1}{1000}$$

$$9,75 = 9\frac{75}{100} = 9\frac{3}{4}$$

$$0,25 = \frac{25}{100} = \frac{1}{4}$$

$$0,999 = \frac{999}{1000}$$

$$0,07 = \frac{7}{100}$$

$$0,5 = \frac{5}{10} = \frac{1}{2}$$

Schrijf de volgende (gemengde) breuken als kommagetallen:

$$1\frac{1}{2} = 1\frac{5}{10} = 1,5$$

$$\frac{5}{10} = 0,5$$

$$\frac{2}{100} = 0,02$$

$$\frac{5}{1000} = 0,005$$

$$12\frac{5}{10} = 12,5$$

$$\frac{285}{1000} = 0,285$$

$$3\frac{3}{10} = 3,3$$

$$\frac{1}{2} = \frac{5}{10} = 0,5$$

$$\frac{1}{10} = 0,1$$

$$\frac{2}{5} = \frac{4}{10} = 0,4$$

$$\frac{9}{100} = 0,09$$

$$\frac{46}{100} = 0,46$$

