

Schrijf de volgende kommagetallen als (gemengde) breuk:

$0,4 =$

$0,07 =$

$0,001 =$

$0,25 =$

$0,5 =$

$0,75 =$

$0,03 =$

$0,009 =$

$0,503 =$

$1,5 =$

$4,75 =$

$0,59 =$

Schrijf de volgende (gemengde) breuken als kommagetallen:

$\frac{6}{100} =$

$\frac{255}{1000} =$

$\frac{1}{10} =$

$1\frac{7}{10} =$

$\frac{1}{2} =$

$\frac{3}{100} =$

$\frac{5}{1000} =$

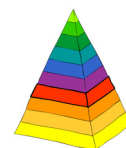
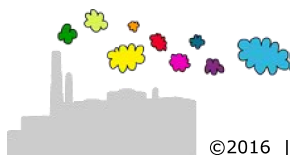
$1\frac{1}{2} =$

$\frac{3}{100} =$

$4\frac{5}{10} =$

$\frac{2}{5} =$

$\frac{5}{10} =$



Schrijf de volgende kommagetallen als (gemengde) breuk:

$$0,4 = \frac{4}{10} = \frac{2}{5}$$

$$0,07 = \frac{7}{100}$$

$$0,001 = \frac{1}{1000}$$

$$0,25 = \frac{25}{100} = \frac{1}{4}$$

$$0,5 = \frac{5}{10} = \frac{1}{2}$$

$$0,75 = \frac{75}{100} = \frac{3}{4}$$

$$0,03 = \frac{3}{100}$$

$$0,009 = \frac{9}{1000}$$

$$0,503 = \frac{503}{1000}$$

$$1,5 = 1\frac{5}{10} = 1\frac{1}{2}$$

$$4,75 = 4\frac{75}{100} = 4\frac{3}{4}$$

$$0,59 = \frac{59}{100}$$

Schrijf de volgende (gemengde) breuken als kommagetallen:

$$\frac{6}{100} = 0,06$$

$$\frac{255}{1000} = 0,255$$

$$\frac{1}{10} = 0,1$$

$$1\frac{7}{10} = 1,7$$

$$\frac{1}{2} = \frac{5}{10} = 0,5$$

$$\frac{3}{100} = 0,03$$

$$\frac{5}{1000} = 0,005$$

$$1\frac{1}{2} = 1\frac{5}{10} = 1,5$$

$$\frac{3}{100} = 0,03$$

$$4\frac{5}{10} = 4,5$$

$$\frac{2}{5} = \frac{4}{10} = 0,4$$

$$\frac{5}{10} = 0,5$$

