

Extra werkblad bij het **leerwerkboek "Breuken voor groep 5 en 6"**  
van De Sommenfabriek.

**§ 18 | gemengde breuken met gelijke noemers optellen**

$$100\frac{6}{7} + 9\frac{6}{7} =$$

$$8\frac{10}{100} + 9\frac{4}{100} =$$

$$4\frac{7}{1000} + 8\frac{4}{1000} =$$

$$100\frac{4}{10} + 10\frac{1}{10} =$$

$$12\frac{9}{10} + 1000\frac{6}{10} =$$

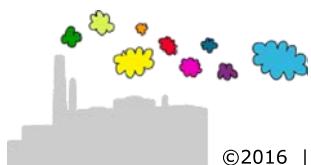
$$1000\frac{9}{1000} + 10\frac{3}{1000} =$$

$$9\frac{7}{8} + 1000\frac{2}{8} =$$

$$5\frac{8}{1000} + 1\frac{2}{1000} =$$

$$6\frac{4}{5} + 6\frac{2}{5} =$$

$$9\frac{1}{8} + 3\frac{1}{8} =$$



Extra werkblad bij het leerwerkboek "Breuken voor groep 5 en 6"  
van De Sommenfabriek.

§ 18 | gemengde breuken met gelijke noemers optellen

$$100\frac{6}{7} + 9\frac{6}{7} = 109\frac{12}{7} = 110\frac{5}{7}$$

$$8\frac{10}{100} + 9\frac{4}{100} = 17\frac{14}{100} = 17\frac{7}{50}$$

$$4\frac{7}{1000} + 8\frac{4}{1000} = 12\frac{11}{1000}$$

$$100\frac{4}{10} + 10\frac{1}{10} = 110\frac{5}{10} = 110\frac{1}{2}$$

$$12\frac{9}{10} + 1000\frac{6}{10} = 1012\frac{15}{10} = 1013\frac{5}{10} = 1013\frac{1}{2}$$

$$1000\frac{9}{1000} + 10\frac{3}{1000} = 1010\frac{12}{1000} = 1010\frac{3}{250}$$

$$9\frac{7}{8} + 1000\frac{2}{8} = 1009\frac{9}{8} = 1010\frac{1}{8}$$

$$5\frac{8}{1000} + 1\frac{2}{1000} = 6\frac{10}{1000} = 6\frac{1}{100}$$

$$6\frac{4}{5} + 6\frac{2}{5} = 12\frac{6}{5} = 13\frac{1}{5}$$

$$9\frac{1}{8} + 3\frac{1}{8} = 12\frac{2}{8} = 12\frac{1}{4}$$

