

64 L = dm³

2 kilo = ons

846 dL = L

51 hm² = dam²

238 cL = dL

397 L = cm³

884 km² = m²

1630 gram = kilo

2,998 hm = km

154,5 L = dm³

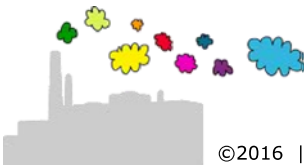
610,7484 dm³ = L

47,351 L = hL

990,7928 dm³ = L

166,8 m² = km²

84,703 dL = L



$$64 \text{ L} = 64 \text{ dm}^3$$

$$2 \text{ kilo} = 20 \text{ ons}$$

$$846 \text{ dL} = 84,6 \text{ L}$$

$$51 \text{ hm}^2 = 5100 \text{ dam}^2 \quad (\text{komma } 2 \times 1 \text{ plaats naar rechts})$$

$$238 \text{ cL} = 23,8 \text{ dL}$$

$$397 \text{ L} = 397 \text{ dm}^3 = 397000 \text{ cm}^3$$

$$884 \text{ km}^2 = 884000000 \text{ m}^2 \quad (\text{komma } 2 \times 3 \text{ plaatsen naar rechts})$$

$$1630 \text{ gram} = 1,63 \text{ kilo}$$

$$2,998 \text{ hm} = 0,2998 \text{ km} \quad (\text{komma } 1 \text{ plaats naar links})$$

$$154,5 \text{ L} = 154,5 \text{ dm}^3$$

$$610,7484 \text{ dm}^3 = 610,7484 \text{ L}$$

$$47,351 \text{ L} = 0,47351 \text{ hL}$$

$$990,7928 \text{ dm}^3 = 990,7928 \text{ L}$$

$$166,8 \text{ m}^2 = 0,0001668 \text{ km}^2 \quad (\text{komma } 2 \times 3 \text{ plaatsen naar links})$$

$$84,703 \text{ dL} = 8,4703 \text{ L}$$

