

5212 kg = g

65 ons = kilo

9507 g = mg

59 kg = hg

10 pond = ons

10 ons = pond

7 pond = gram

5050 cg = g

5893 dg = mg

82 dag = kg

973 gram = ons

7280 cg = g

7801 mg = cg

116 cg = g

4005 gram = kilo

15 kilo = ons

54 g = hg

37 dag = hg

62 ons = kilo

30 ons = kilo

50 ons = kilo

2 kilo = ons

5 pond = kilo

48 dag = kg

7054 dg = g

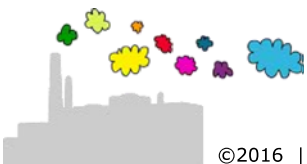
1 kilo = gram

9915 cg = mg

75 ons = kilo

28 pond = kilo

1898 dg = cg



$5212 \text{ kg} = 5212000 \text{ g}$

$65 \text{ ons} = 6,5 \text{ kilo}$

$9507 \text{ g} = 9507000 \text{ mg}$

$59 \text{ kg} = 590 \text{ hg}$

$10 \text{ pond} = 5 \text{ kilo} = 50 \text{ ons}$

$10 \text{ ons} = 1 \text{ kilo} = 2 \text{ pond}$

$7 \text{ pond} = 3,5 \text{ kilo} = 3500 \text{ gram}$

$5050 \text{ cg} = 50,5 \text{ g}$

$5893 \text{ dg} = 589300 \text{ mg}$

$82 \text{ dag} = 0,82 \text{ kg}$

$973 \text{ gram} = 9,73 \text{ ons}$

$7280 \text{ cg} = 72,8 \text{ g}$

$7801 \text{ mg} = 780,1 \text{ cg}$

$116 \text{ cg} = 1,16 \text{ g}$

$4005 \text{ gram} = 4,005 \text{ kilo}$

$15 \text{ kilo} = 150 \text{ ons}$

$54 \text{ g} = 0,54 \text{ hg}$

$37 \text{ dag} = 3,7 \text{ hg}$

$62 \text{ ons} = 6,2 \text{ kilo}$

$30 \text{ ons} = 3 \text{ kilo}$

$50 \text{ ons} = 5 \text{ kilo}$

$2 \text{ kilo} = 20 \text{ ons}$

$5 \text{ pond} = 2,5 \text{ kilo}$

$48 \text{ dag} = 0,48 \text{ kg}$

$7054 \text{ dg} = 705,4 \text{ g}$

$1 \text{ kilo} = 1000 \text{ gram}$

$9915 \text{ cg} = 99150 \text{ mg}$

$75 \text{ ons} = 7,5 \text{ kilo}$

$28 \text{ pond} = 14 \text{ kilo}$

$1898 \text{ dg} = 18980 \text{ cg}$

