

37 hg = ..... kg

508 cg = ..... g

3434 dg = ..... g

7677 cg = ..... dg

11 pond = ..... ons

13 pond = ..... kilo

539 dg = ..... g

15 ton = ..... kilo

14 kilo = ..... gram

20 hg = ..... dag

60 kg = ..... dag

10 pond = ..... ons

1506 g = ..... dg

7055 gram = ..... kilo

17 kilo = ..... gram

12 pond = ..... ons

7 pond = ..... gram

1600 kilo = ..... ton

1900 kilo = ..... ton

5 pond = ..... gram

4174 g = ..... dag

8920 dg = ..... cg

25 ons = ..... pond

8178 dg = ..... dag

82 ons = ..... gram

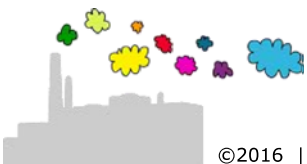
7561 mg = ..... cg

1176 cg = ..... g

1500 gram = ..... pond

6323 dg = ..... cg

4738 g = ..... mg



$37 \text{ hg} = 3,7 \text{ kg}$

$508 \text{ cg} = 5,08 \text{ g}$

$3434 \text{ dg} = 343,4 \text{ g}$

$7677 \text{ cg} = 767,7 \text{ dg}$

$11 \text{ pond} = 5,5 \text{ kilo} = 55 \text{ ons}$

$13 \text{ pond} = 6,5 \text{ kilo}$

$539 \text{ dg} = 53,9 \text{ g}$

$15 \text{ ton} = 15000 \text{ kilo}$

$14 \text{ kilo} = 14000 \text{ gram}$

$20 \text{ hg} = 200 \text{ dag}$

$60 \text{ kg} = 6000 \text{ dag}$

$10 \text{ pond} = 5 \text{ kilo} = 50 \text{ ons}$

$1506 \text{ g} = 15060 \text{ dg}$

$7055 \text{ gram} = 7,055 \text{ kilo}$

$17 \text{ kilo} = 17000 \text{ gram}$

$12 \text{ pond} = 6 \text{ kilo} = 60 \text{ ons}$

$7 \text{ pond} = 3,5 \text{ kilo} = 3500 \text{ gram}$

$1600 \text{ kilo} = 1,6 \text{ ton}$

$1900 \text{ kilo} = 1,9 \text{ ton}$

$5 \text{ pond} = 2,5 \text{ kilo} = 2500 \text{ gram}$

$4174 \text{ g} = 417,4 \text{ dag}$

$8920 \text{ dg} = 89200 \text{ cg}$

$25 \text{ ons} = 2,5 \text{ kilo} = 5 \text{ pond}$

$8178 \text{ dg} = 81,78 \text{ dag}$

$82 \text{ ons} = 8200 \text{ gram}$

$7561 \text{ mg} = 756,1 \text{ cg}$

$1176 \text{ cg} = 11,76 \text{ g}$

$1500 \text{ gram} = 1,5 \text{ kilo} = 3 \text{ pond}$

$6323 \text{ dg} = 63230 \text{ cg}$

$4738 \text{ g} = 4738000 \text{ mg}$

