

2095 dg = g

899 gram = ons

54 ons = kilo

5519 g = cg

93 ons = gram

8 ton = kilo

5518 cg = dg

30 kilo = ons

32 dag = kg

9 hg = kg

20 g = kg

60 ons = pond

6822 dg = dag

4866 dg = dag

6656 mg = g

6383 dg = g

1320 cg = mg

4634 cg = dg

27 ton = kilo

27 ton = kilo

71 hg = kg

22 pond = kilo

2028 hg = g

7238 g = dag

13 kilo = ons

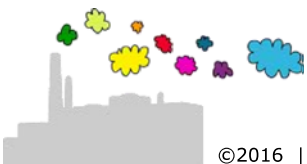
35 ons = pond

10 pond = gram

9774 dg = dag

8506 g = mg

20 ons = pond



$$2095 \text{ dg} = 209,5 \text{ g}$$

$$899 \text{ gram} = 8,99 \text{ ons}$$

$$54 \text{ ons} = 5,4 \text{ kilo}$$

$$5519 \text{ g} = 551900 \text{ cg}$$

$$93 \text{ ons} = 9300 \text{ gram}$$

$$8 \text{ ton} = 8000 \text{ kilo}$$

$$5518 \text{ cg} = 551,8 \text{ dg}$$

$$30 \text{ kilo} = 300 \text{ ons}$$

$$32 \text{ dag} = 0,32 \text{ kg}$$

$$9 \text{ hg} = 0,9 \text{ kg}$$

$$20 \text{ g} = 0,02 \text{ kg}$$

$$60 \text{ ons} = 6 \text{ kilo} = 12 \text{ pond}$$

$$6822 \text{ dg} = 68,22 \text{ dag}$$

$$4866 \text{ dg} = 48,66 \text{ dag}$$

$$6656 \text{ mg} = 6,656 \text{ g}$$

$$6383 \text{ dg} = 638,3 \text{ g}$$

$$1320 \text{ cg} = 13200 \text{ mg}$$

$$4634 \text{ cg} = 463,4 \text{ dg}$$

$$27 \text{ ton} = 27000 \text{ kilo}$$

$$27 \text{ ton} = 27000 \text{ kilo}$$

$$71 \text{ hg} = 7,1 \text{ kg}$$

$$22 \text{ pond} = 11 \text{ kilo}$$

$$2028 \text{ hg} = 202800 \text{ g}$$

$$7238 \text{ g} = 723,8 \text{ dag}$$

$$13 \text{ kilo} = 130 \text{ ons}$$

$$35 \text{ ons} = 3,5 \text{ kilo} = 7 \text{ pond}$$

$$10 \text{ pond} = 5 \text{ kilo} = 5000 \text{ gram}$$

$$9774 \text{ dg} = 97,74 \text{ dag}$$

$$8506 \text{ g} = 8506000 \text{ mg}$$

$$20 \text{ ons} = 2 \text{ kilo} = 4 \text{ pond}$$

