

4718 cg = ..... g

6257 dg = ..... cg

2027 cg = ..... g

6 pond = ..... gram

2346 cg = ..... mg

40 dag = ..... kg

3307 dag = ..... dg

24 pond = ..... kilo

200 kilo = ..... ton

512 dg = ..... g

19 pond = ..... kilo

19 ton = ..... kilo

1053 cg = ..... g

29 ton = ..... kilo

26 kilo = ..... pond

6421 dg = ..... g

6818 hg = ..... g

1600 kilo = ..... ton

7408 gram = ..... kilo

5000 gram = ..... pond

1800 kilo = ..... ton

61 ons = ..... gram

319 dg = ..... cg

7751 mg = ..... g

3679 dg = ..... cg

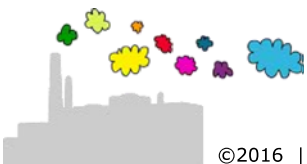
8 pond = ..... gram

8266 dg = ..... cg

1823 dg = ..... cg

4000 gram = ..... pond

500 gram = ..... pond



$4718 \text{ cg} = 47,18 \text{ g}$

$6257 \text{ dg} = 62570 \text{ cg}$

$2027 \text{ cg} = 20,27 \text{ g}$

$6 \text{ pond} = 3 \text{ kilo} = 3000 \text{ gram}$

$2346 \text{ cg} = 23460 \text{ mg}$

$40 \text{ dag} = 0,4 \text{ kg}$

$3307 \text{ dag} = 330700 \text{ dg}$

$24 \text{ pond} = 12 \text{ kilo}$

$200 \text{ kilo} = 0,2 \text{ ton}$

$512 \text{ dg} = 51,2 \text{ g}$

$19 \text{ pond} = 9,5 \text{ kilo}$

$19 \text{ ton} = 19000 \text{ kilo}$

$1053 \text{ cg} = 10,53 \text{ g}$

$29 \text{ ton} = 29000 \text{ kilo}$

$26 \text{ kilo} = 52 \text{ pond}$

$6421 \text{ dg} = 642,1 \text{ g}$

$6818 \text{ hg} = 681800 \text{ g}$

$1600 \text{ kilo} = 1,6 \text{ ton}$

$7408 \text{ gram} = 7,408 \text{ kilo}$

$5000 \text{ gram} = 5 \text{ kilo} = 10 \text{ pond}$

$1800 \text{ kilo} = 1,8 \text{ ton}$

$61 \text{ ons} = 6100 \text{ gram}$

$319 \text{ dg} = 3190 \text{ cg}$

$7751 \text{ mg} = 7,751 \text{ g}$

$3679 \text{ dg} = 36790 \text{ cg}$

$8 \text{ pond} = 4 \text{ kilo} = 4000 \text{ gram}$

$8266 \text{ dg} = 82660 \text{ cg}$

$1823 \text{ dg} = 18230 \text{ cg}$

$4000 \text{ gram} = 4 \text{ kilo} = 8 \text{ pond}$

$500 \text{ gram} = 0,5 \text{ kilo} = 1 \text{ pond}$

