

11 pond = ons

1312 dg = g

19 kilo = gram

20 kilo = ons

15 ons = pond

9 ton = kilo

12 kilo = pond

52 g = kg

4855 dag = dg

3737 cg = dg

2 pond = ons

22 ton = kilo

4607 dg = mg

6907 mg = cg

2593 dg = dag

9855 dg = mg

1591 dg = mg

26 ton = kilo

19 kilo = gram

14 g = hg

486 dg = cg

7 kilo = gram

17 kilo = pond

125 kg = g

68 dag = kg

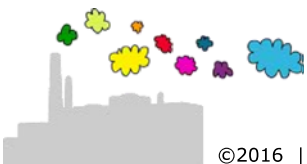
8662 cg = dg

9095 g = cg

170 gram = ons

9363 mg = cg

4748 dg = mg



$$11 \text{ pond} = 5,5 \text{ kilo} = 55 \text{ ons}$$

$$1312 \text{ dg} = 131,2 \text{ g}$$

$$19 \text{ kilo} = 19000 \text{ gram}$$

$$20 \text{ kilo} = 200 \text{ ons}$$

$$15 \text{ ons} = 1,5 \text{ kilo} = 3 \text{ pond}$$

$$9 \text{ ton} = 9000 \text{ kilo}$$

$$12 \text{ kilo} = 24 \text{ pond}$$

$$52 \text{ g} = 0,052 \text{ kg}$$

$$4855 \text{ dag} = 485500 \text{ dg}$$

$$3737 \text{ cg} = 373,7 \text{ dg}$$

$$2 \text{ pond} = 1 \text{ kilo} = 10 \text{ ons}$$

$$22 \text{ ton} = 22000 \text{ kilo}$$

$$4607 \text{ dg} = 460700 \text{ mg}$$

$$6907 \text{ mg} = 690,7 \text{ cg}$$

$$2593 \text{ dg} = 25,93 \text{ dag}$$

$$9855 \text{ dg} = 985500 \text{ mg}$$

$$1591 \text{ dg} = 159100 \text{ mg}$$

$$26 \text{ ton} = 26000 \text{ kilo}$$

$$19 \text{ kilo} = 19000 \text{ gram}$$

$$14 \text{ g} = 0,14 \text{ hg}$$

$$486 \text{ dg} = 4860 \text{ cg}$$

$$7 \text{ kilo} = 7000 \text{ gram}$$

$$17 \text{ kilo} = 34 \text{ pond}$$

$$125 \text{ kg} = 125000 \text{ g}$$

$$68 \text{ dag} = 0,68 \text{ kg}$$

$$8662 \text{ cg} = 866,2 \text{ dg}$$

$$9095 \text{ g} = 909500 \text{ cg}$$

$$170 \text{ gram} = 1,7 \text{ ons}$$

$$9363 \text{ mg} = 936,3 \text{ cg}$$

$$4748 \text{ dg} = 474800 \text{ mg}$$

