

5 kilo = pond

6894 gram = kilo

6 kilo = ons

84 ons = kilo

1600 kilo = ton

9 pond = ons

2 pond = gram

1000 kilo = ton

225 gram = kilo

5 ons = pond

10 kilo = gram

6 ton = kilo

500 gram = pond

8 pond = gram

918 gram = ons

1963 gram = kilo

608 gram = ons

5000 gram = pond

6 kilo = gram

6 kilo = gram

80 ons = kilo

6 pond = gram

38 ons = kilo

15 kilo = ons

13 kilo = gram

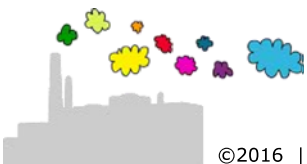
18 kilo = gram

25 ons = pond

1 pond = ons

19 kilo = gram

5000 gram = pond



$$5 \text{ kilo} = 10 \text{ pond}$$

$$6894 \text{ gram} = 6,894 \text{ kilo}$$

$$6 \text{ kilo} = 60 \text{ ons}$$

$$84 \text{ ons} = 8,4 \text{ kilo}$$

$$1600 \text{ kilo} = 1,6 \text{ ton}$$

$$9 \text{ pond} = 4,5 \text{ kilo} = 45 \text{ ons}$$

$$2 \text{ pond} = 1 \text{ kilo} = 1000 \text{ gram}$$

$$1000 \text{ kilo} = 1 \text{ ton}$$

$$225 \text{ gram} = 0,225 \text{ kilo}$$

$$5 \text{ ons} = 0,5 \text{ kilo} = 1 \text{ pond}$$

$$10 \text{ kilo} = 10000 \text{ gram}$$

$$6 \text{ ton} = 6000 \text{ kilo}$$

$$500 \text{ gram} = 0,5 \text{ kilo} = 1 \text{ pond}$$

$$8 \text{ pond} = 4 \text{ kilo} = 4000 \text{ gram}$$

$$918 \text{ gram} = 9,18 \text{ ons}$$

$$1963 \text{ gram} = 1,963 \text{ kilo}$$

$$608 \text{ gram} = 6,08 \text{ ons}$$

$$5000 \text{ gram} = 5 \text{ kilo} = 10 \text{ pond}$$

$$6 \text{ kilo} = 6000 \text{ gram}$$

$$6 \text{ kilo} = 6000 \text{ gram}$$

$$80 \text{ ons} = 8 \text{ kilo}$$

$$6 \text{ pond} = 3 \text{ kilo} = 3000 \text{ gram}$$

$$38 \text{ ons} = 3,8 \text{ kilo}$$

$$15 \text{ kilo} = 150 \text{ ons}$$

$$13 \text{ kilo} = 13000 \text{ gram}$$

$$18 \text{ kilo} = 18000 \text{ gram}$$

$$25 \text{ ons} = 2,5 \text{ kilo} = 5 \text{ pond}$$

$$1 \text{ pond} = 0,5 \text{ kilo} = 5 \text{ ons}$$

$$19 \text{ kilo} = 19000 \text{ gram}$$

$$5000 \text{ gram} = 5 \text{ kilo} = 10 \text{ pond}$$

