

$4331 \text{ cg} = \dots\dots\dots \text{ dg}$

$38200 : 100 = \dots\dots\dots$

$47100 : 100 = \dots\dots\dots$

$577 \times 1000 = \dots\dots\dots$

$890 \times 1000 = \dots\dots\dots$

$591000 : 1000 = \dots\dots\dots$

$1884 \text{ hg} = \dots\dots\dots \text{ g}$

$226 \times 1000 = \dots\dots\dots$

$120 \text{ seconden} = \dots\dots\dots \text{ minuten}$

$1950 : 10 = \dots\dots\dots$

$5 \text{ kwartier} = \dots\dots\dots \text{ minuten}$

$8925 : 1000 = \dots\dots\dots$

$5592 \text{ dg} = \dots\dots\dots \text{ cg}$

$94 \text{ dg} = \dots\dots\dots \text{ hg}$

$868 \times 100 = \dots\dots\dots$

$2 \text{ kwartier} = \dots\dots\dots \text{ minuten}$

$8172 \text{ cg} = \dots\dots\dots \text{ dg}$

$50700 : 100 = \dots\dots\dots$

$79 : 10 = \dots\dots\dots$

$766 \times 100 = \dots\dots\dots$

$5175 \text{ dag} = \dots\dots\dots \text{ dg}$

$10 \text{ weken} = \dots\dots\dots \text{ dagen}$

$6860 : 10 = \dots\dots\dots$

$129,44 \text{ km} = \dots\dots\dots \text{ hm}$

$1250 : 10 = \dots\dots\dots$

$5274 \text{ cg} = \dots\dots\dots \text{ dg}$

$9 \times 10 = \dots\dots\dots$

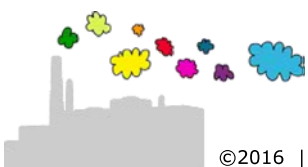
$43,34 \text{ km} = \dots\dots\dots \text{ hm}$

$56 \times 10 = \dots\dots\dots$

$20800 : 100 = \dots\dots\dots$

$151 : 10 = \dots\dots\dots$

$4190 \text{ kg} = \dots\dots\dots \text{ g}$



$4331 \text{ cg} = 433,1 \text{ dg}$

$38200 : 100 = 382$

$47100 : 100 = 471$

$577 \times 1000 = 577000$

$890 \times 1000 = 890000$

$591000 : 1000 = 591$

$1884 \text{ hg} = 188400 \text{ g}$

$226 \times 1000 = 226000$

$120 \text{ seconden} = (120 : 60) \text{ minuten} = 2 \text{ minuten}$

$1950 : 10 = 195$

$5 \text{ kwartier} = (5 \times 15) \text{ minuten} = 75 \text{ minuten}$

$8925 : 1000 = 8,925$

$5592 \text{ dg} = 55920 \text{ cg}$

$94 \text{ dg} = 0,094 \text{ hg}$

$868 \times 100 = 86800$

$2 \text{ kwartier} = (2 \times 15) \text{ minuten} = 30 \text{ minuten}$

$8172 \text{ cg} = 817,2 \text{ dg}$

$50700 : 100 = 507$

$79 : 10 = 7,9$

$766 \times 100 = 76600$

$5175 \text{ dag} = 517500 \text{ dg}$

$10 \text{ weken} = (10 \times 7) \text{ dagen} = 70 \text{ dagen}$

$6860 : 10 = 686$

$129,44 \text{ km} = 1294,4 \text{ hm}$ (komma 1 naar rechts)

$1250 : 10 = 125$

$5274 \text{ cg} = 527,4 \text{ dg}$

$9 \times 10 = 90$

$43,34 \text{ km} = 433,4 \text{ hm}$ (komma 1 naar rechts)

$56 \times 10 = 560$

$20800 : 100 = 208$

$151 : 10 = 15,1$

$4190 \text{ kg} = 4,19 \text{ g}$

