

$9840 : 10 = \dots\dots\dots$

$16193 : 1000 = \dots\dots\dots$

$1918 : 100 = \dots\dots\dots$

$25 \text{ kg} = \dots\dots\dots \text{ hg}$

$8204 \text{ g} = \dots\dots\dots \text{ cg}$

$14930 : 1000 = \dots\dots\dots$

$923 \times 100 = \dots\dots\dots$

$18031 : 1000 = \dots\dots\dots$

$252 \times 10 = \dots\dots\dots$

$631 \times 1000 = \dots\dots\dots$

$57 \text{ g} = \dots\dots\dots \text{ hg}$

$376,336 \text{ dam} = \dots\dots\dots \text{ hm}$

$8632 : 1000 = \dots\dots\dots$

$102 : 10 = \dots\dots\dots$

$45,54 \text{ dam} = \dots\dots\dots \text{ cm}$

$83 \text{ g} = \dots\dots\dots \text{ hg}$

$748 \times 100 = \dots\dots\dots$

$112,4 \text{ km} = \dots\dots\dots \text{ dm}$

$61,74 \text{ cm} = \dots\dots\dots \text{ hm}$

$8560 \text{ hg} = \dots\dots\dots \text{ g}$

$98,823 \text{ hm} = \dots\dots\dots \text{ dam}$

$68,09 \text{ hm} = \dots\dots\dots \text{ m}$

$96400 : 100 = \dots\dots\dots$

$5880 : 10 = \dots\dots\dots$

$54 \text{ g} = \dots\dots\dots \text{ hg}$

$1400 : 10 = \dots\dots\dots$

$799,465 \text{ hm} = \dots\dots\dots \text{ cm}$

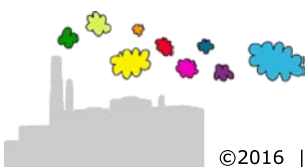
$290 \times 10 = \dots\dots\dots$

$10 \text{ kwartier} = \dots\dots\dots \text{ minuten}$

$29,748 \text{ dm} = \dots\dots\dots \text{ hm}$

$15,9 \text{ dm} = \dots\dots\dots \text{ dam}$

$65,47 \text{ dam} = \dots\dots\dots \text{ m}$



$$9840 : 10 = 984$$

$$16193 : 1000 = 16,193$$

$$1918 : 100 = 19,18$$

$$25 \text{ kg} = 2,5 \text{ hg}$$

$$8204 \text{ g} = 820400 \text{ cg}$$

$$14930 : 1000 = 14,93$$

$$923 \times 100 = 92300$$

$$18031 : 1000 = 18,031$$

$$252 \times 10 = 2520$$

$$631 \times 1000 = 631000$$

$$57 \text{ g} = 0,57 \text{ hg}$$

$$376,336 \text{ dam} = 37,6336 \text{ hm} \text{ (komma 1 naar links)}$$

$$8632 : 1000 = 8,632$$

$$102 : 10 = 10,2$$

$$45,54 \text{ dam} = 45540 \text{ cm} \text{ (komma 3 naar rechts)}$$

$$83 \text{ g} = 0,83 \text{ hg}$$

$$748 \times 100 = 74800$$

$$112,4 \text{ km} = 1124000 \text{ dm} \text{ (komma 4 naar rechts)}$$

$$61,74 \text{ cm} = 0,006174 \text{ hm} \text{ (komma 4 naar links)}$$

$$8560 \text{ hg} = 856000 \text{ g}$$

$$98,823 \text{ hm} = 988,23 \text{ dam} \text{ (komma 1 naar rechts)}$$

$$68,09 \text{ hm} = 6809 \text{ m} \text{ (komma 2 naar rechts)}$$

$$96400 : 100 = 964$$

$$5880 : 10 = 588$$

$$54 \text{ g} = 0,54 \text{ hg}$$

$$1400 : 10 = 140$$

$$799,465 \text{ hm} = 7994650 \text{ cm} \text{ (komma 4 naar rechts)}$$

$$290 \times 10 = 2900$$

$$10 \text{ kwartier} = (10 \times 15) \text{ minuten} = 150 \text{ minuten}$$

$$29,748 \text{ dm} = 0,02975 \text{ hm} \text{ (komma 3 naar links)}$$

$$15,9 \text{ dm} = 0,159 \text{ dam} \text{ (komma 2 naar links)}$$

$$65,47 \text{ dam} = 654,7 \text{ m} \text{ (komma 1 naar rechts)}$$

