

262 gram = ons

37 ons = kilo

26 kilo = ons

13 ons = kilo

11 kilo = ons

30 ons = gram

74 ons = gram

92 ons = kilo

53 ons = kilo

391 gram = ons

18 kilo = ons

415 gram = ons

22 kilo = ons

676 gram = ons

82 ons = gram

10 ons = kilo

36 ons = gram

9 kilo = ons

56 ons = kilo

62 ons = gram

35 ons = gram

825 gram = ons

85 ons = kilo

22 kilo = ons

836 gram = ons

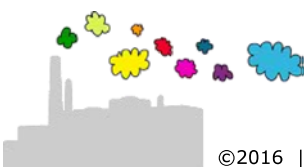
88 ons = kilo

16 kilo = ons

5 kilo = ons

8 kilo = ons

8 kilo = ons



$262 \text{ gram} = 2,62 \text{ ons}$

$37 \text{ ons} = 3,7 \text{ kilo}$

$26 \text{ kilo} = 260 \text{ ons}$

$13 \text{ ons} = 1,3 \text{ kilo}$

$11 \text{ kilo} = 110 \text{ ons}$

$30 \text{ ons} = 3000 \text{ gram}$

$74 \text{ ons} = 7400 \text{ gram}$

$92 \text{ ons} = 9,2 \text{ kilo}$

$53 \text{ ons} = 5,3 \text{ kilo}$

$391 \text{ gram} = 3,91 \text{ ons}$

$18 \text{ kilo} = 180 \text{ ons}$

$415 \text{ gram} = 4,15 \text{ ons}$

$22 \text{ kilo} = 220 \text{ ons}$

$676 \text{ gram} = 6,76 \text{ ons}$

$82 \text{ ons} = 8200 \text{ gram}$

$10 \text{ ons} = 1 \text{ kilo}$

$36 \text{ ons} = 3600 \text{ gram}$

$9 \text{ kilo} = 90 \text{ ons}$

$56 \text{ ons} = 5,6 \text{ kilo}$

$62 \text{ ons} = 6200 \text{ gram}$

$35 \text{ ons} = 3500 \text{ gram}$

$825 \text{ gram} = 8,25 \text{ ons}$

$85 \text{ ons} = 8,5 \text{ kilo}$

$22 \text{ kilo} = 220 \text{ ons}$

$836 \text{ gram} = 8,36 \text{ ons}$

$88 \text{ ons} = 8,8 \text{ kilo}$

$16 \text{ kilo} = 160 \text{ ons}$

$5 \text{ kilo} = 50 \text{ ons}$

$8 \text{ kilo} = 80 \text{ ons}$

$8 \text{ kilo} = 80 \text{ ons}$

