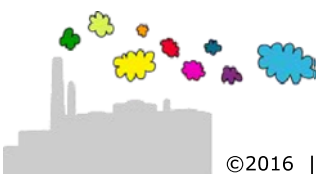
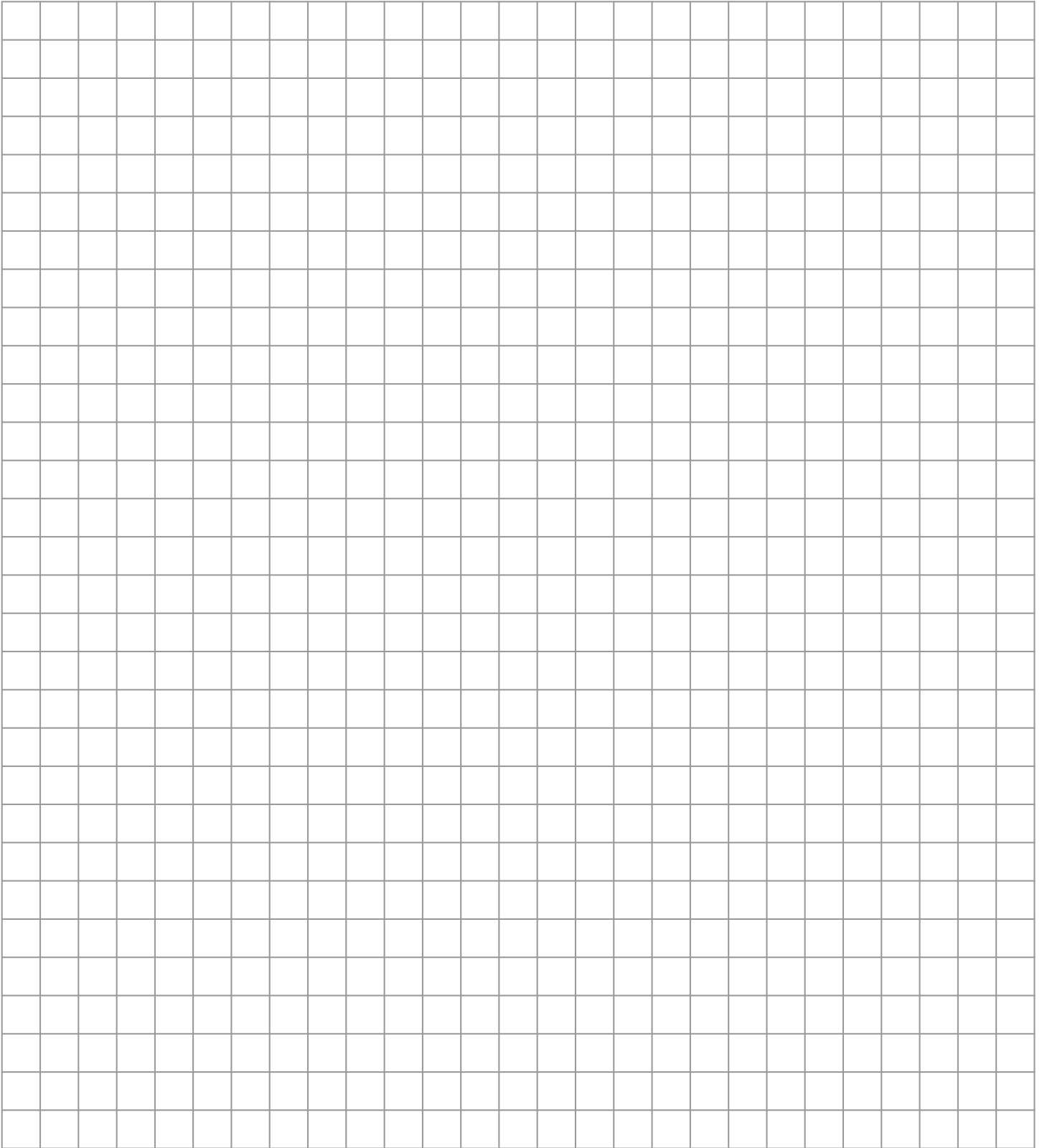


$$12,15 : 3 =$$

$$0,4 \times 91,5 =$$

$$18 - 0,0025 =$$

$$3,416 + 0,84 + 4 + 7,52 =$$



$12,15 : 3 = 4,05$

$0,4 \times 91,5 = 36,60$

$18 - 0,0025 = 17,9975$

$3,416 + 0,84 + 4 + 7,52 = 15,776$

| | |
|---|---|
| $\begin{array}{r} 3 \overline{) 12,15} \quad 4,05 \\ \underline{12} \\ 0 15 \\ \underline{15} \\ 0 \end{array}$ | $\begin{array}{r} 7 999 \\ 18,000 \\ \underline{0} 0025 \\ 17,9975 \end{array}$ |
| $\begin{array}{r} 0,4 \\ 91,5 \times \\ \hline 20 \\ 40 \\ 3600 \\ \hline 36,60 + \end{array}$ | $\begin{array}{r} 1 \\ 3,416 \\ 0,84 \\ 4 \\ 7,52 \\ \hline 15,776 + \end{array}$ |

