

Streep eerst zo mogelijk iets weg

$$\frac{25}{2} \times \frac{11}{5} =$$

$$\frac{18}{8} \times \frac{1}{9} =$$

$$\frac{2}{400} \times \frac{4}{1} =$$

$$\frac{35}{12} \times \frac{11}{5} =$$

$$\frac{33}{2} \times \frac{9}{11} =$$

$$\frac{20}{2} \times \frac{9}{4} =$$

$$\frac{10}{27} \times \frac{9}{9} =$$

$$\frac{45}{9} \times \frac{5}{9} =$$

$$\frac{4}{15} \times \frac{3}{5} =$$

$$\frac{700}{11} \times \frac{8}{7} =$$

$$\frac{56}{3} \times \frac{2}{8} =$$

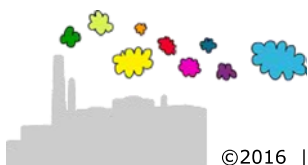
$$\frac{4}{50} \times \frac{5}{1} =$$

$$\frac{25}{10} \times \frac{9}{5} =$$

$$\frac{80}{4} \times \frac{3}{8} =$$

$$\frac{100}{7} \times \frac{5}{1} =$$

$$\frac{3}{70} \times \frac{7}{11} =$$



Streep eerst zo mogelijk iets weg

$$\frac{25}{2} \times \frac{11}{5} = \frac{55}{2} = 27\frac{1}{2}$$

$$\frac{18}{8} \times \frac{1}{9} = \frac{2}{8} = \frac{1}{4}$$

$$\frac{2}{400} \times \frac{4}{1} = \frac{2}{100} = \frac{1}{50}$$

$$\frac{35}{12} \times \frac{11}{5} = \frac{77}{12} = 6\frac{5}{12}$$

$$\frac{33}{2} \times \frac{9}{11} = \frac{27}{2} = 13\frac{1}{2}$$

$$\frac{20}{2} \times \frac{9}{4} = \frac{45}{2} = 22\frac{1}{2}$$

$$\frac{10}{27} \times \frac{9}{9} = \frac{10}{27}$$

$$\frac{45}{9} \times \frac{5}{9} = \frac{25}{9} = 2\frac{7}{9}$$

$$\frac{4}{15} \times \frac{3}{5} = \frac{4}{25}$$

$$\frac{700}{11} \times \frac{8}{7} = \frac{800}{11} = 72\frac{8}{11}$$

$$\frac{56}{3} \times \frac{2}{8} = \frac{14}{3} = 4\frac{2}{3}$$

$$\frac{4}{50} \times \frac{5}{1} = \frac{4}{10} = \frac{2}{5}$$

$$\frac{25}{10} \times \frac{9}{5} = \frac{45}{10} = 4\frac{5}{10} = 4\frac{1}{2}$$

$$\frac{80}{4} \times \frac{3}{8} = \frac{30}{4} = 7\frac{2}{4} = 7\frac{1}{2}$$

$$\frac{100}{7} \times \frac{5}{1} = \frac{500}{7} = 71\frac{3}{7}$$

$$\frac{3}{70} \times \frac{7}{11} = \frac{3}{110}$$

