

Extra werkblad bij het **leerwerkboek "Breuken voor groep 7 en 8"** van De Sommenfabriek.
20 | gemengde breuken met gelijke noemers aftrekken met "lenen"

$$20\frac{6}{8} - 11\frac{6}{8} =$$

$$11\frac{1}{5} - 4\frac{4}{5} =$$

$$12\frac{5}{100} - 3\frac{7}{100} =$$

$$9\frac{2}{7} - 3\frac{3}{7} =$$

$$14\frac{5}{12} - 6\frac{8}{12} =$$

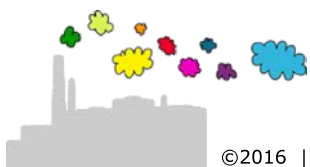
$$15\frac{2}{9} - 12\frac{3}{9} =$$

$$15\frac{4}{7} - 6\frac{5}{7} =$$

$$109\frac{4}{11} - 100\frac{10}{11} =$$

$$13\frac{1}{9} - 6\frac{4}{9} =$$

$$10\frac{2}{5} - 6\frac{2}{5} =$$



$$20\frac{6}{8} - 11\frac{6}{8} = 9\frac{0}{8} = 9$$

$$11\frac{1}{5} - 4\frac{4}{5} = 10\frac{6}{5} - 4\frac{4}{5} = 6\frac{2}{5}$$

$$12\frac{5}{100} - 3\frac{7}{100} = 11\frac{105}{100} - 3\frac{7}{100} = 8\frac{98}{100} = 8\frac{49}{50}$$

$$9\frac{2}{7} - 3\frac{3}{7} = 8\frac{9}{7} - 3\frac{3}{7} = 5\frac{6}{7}$$

$$14\frac{5}{12} - 6\frac{8}{12} = 13\frac{17}{12} - 6\frac{8}{12} = 7\frac{9}{12} = 7\frac{3}{4}$$

$$15\frac{2}{9} - 12\frac{3}{9} = 14\frac{11}{9} - 12\frac{3}{9} = 2\frac{8}{9}$$

$$15\frac{4}{7} - 6\frac{5}{7} = 14\frac{11}{7} - 6\frac{5}{7} = 8\frac{6}{7}$$

$$109\frac{4}{11} - 100\frac{10}{11} = 108\frac{15}{11} - 100\frac{10}{11} = 8\frac{5}{11}$$

$$13\frac{1}{9} - 6\frac{4}{9} = 12\frac{10}{9} - 6\frac{4}{9} = 6\frac{6}{9} = 6\frac{2}{3}$$

$$10\frac{2}{5} - 6\frac{2}{5} = 4\frac{0}{5} = 4$$

